



THAMES VALLEY WOODTURNER



*A publication of the Thames Valley Woodturners Guild (since 1997)
Meetings held at 2155 Crumlin Side Road, London*

A MESSAGE FROM YOUR PRESIDENT:

Here I am 5 months making chips as Pres.. From virtual to live meetings, we are making a comeback!

It is interesting that our club has been leading the way! Yes, we had planned our Chain Saw Safety demonstration followed by Gold in the Wood before the AAW released their versions. Ours were better? The Oneway was an excellent demo. And don't forget Carl Durance's two excellent Demos to get us started. As you can see the Exec has been working to get what you want. We can always use a hand with future Demos. So, if you want to pass on some Knowledge & ideas, let me know!

Some people look at tea leaves, I look at wood curls. They look good! In Sept. We will be having Nicole Rumble from 3M come to the club to speak on sandpaper. So, bring your questions! You can also bring your ideas for cutting, storing, using, of sandpaper. Remember the more you put into it the more you get out of it! We do too!

We are working on the Oct. Meeting but as of yet we have nothing to announce. I chose for the Presidents Challenge something that everyone could do, whether you have a small lathe or a jumbo. I would like to see everyone try whether beginner or veteran step out of your comfort zone & try something different. Artsy, serious or funny, give it a go! Don't be left out! Put something on the table! For years I put nothing on the table, my loss. SPORTS RELATED.

I would like to thank the Executive with their many talents who have helped me as I have taken on the roll as President. It is not easy.

Sorry got to go, got a turn!!

Rob Pres.



CONTENTS

PRESIDENT'S MESSAGE P1

MAY MEETING - P1

MAY SHOW & TELL - P2

ONEWAY TOUR - P2

JUNE MEETING - P3

JUNE BLOOPERS - P3

JUNE SHOW & TELL - P4

GUILD ON SOCIAL MEDIA - P4

TOPS FOR TOTS - P4

CALENDAR OF EVENTS - P5

FOR SALE&WANTED ADS - P6

GUILD ADVERTISERS - P7

ANY MEMBER WISHING TO CONTRIBUTE CONTENT TO THE NEWSLETTER IN THE FORM OF ARTICLES, TIPS, OR WANT-ADS PLEASE CONTACT JEN & KYLE (PHOTOS, ARTICLES, SITES OF INTEREST) AT

TVWGNEWSLETTER@GMAIL.COM

FOR A GUILD INFO/POLICY SHEET OR MENTORS LIST, EMAIL

INFO@THAMESVALLEYWOODTURNERS.COM OR REFER TO OUR WEB SITE AT:

[HTTP://WWW.THAMESVALLEYWOODTURNERS.COM/](http://WWW.THAMESVALLEYWOODTURNERS.COM/)



May Meeting

Sharpening by Kevin Clay of ONEWAY Manufacturing

We had Kevin come from Oneway to talk to us about the importance of a good sharp tool, how to accomplish that and some interesting history behind many of the tools that we all own and use!

MAY Show & Tell



Kyle
Headphone stand - made from walnut and marblewood, General finish High Performance top coat



Doug Bruce
Live Edge Bowl



Reg Rumble
Hummingbird House



Reg Rumble
Bird Feeder



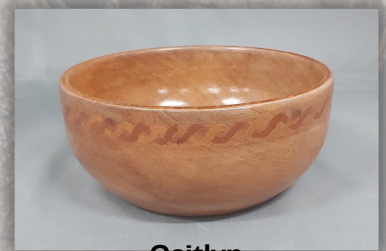
Rob Howlett
Mystery Wood, finish was Interbuild (described as an Amazon equivalent to Osmo oil)



Doug Bruce
Pepper Mill



Doug Bruce
Mortar



Caitlyn
Honduras mahogany, embellished with hand painting, latex urethane finish. This was Caitlyn's first time turning!! Nice job!

ONEWAY Facility Tour

FRIDAY, MAY 27th, 2022.



by TVWG's information-gatherer-extraordinaire!

On the afternoon of Friday, May 27th, 2022, approximately 25 Guild members met at the Oneway facility in Stratford, Ontario where we were greeted by Kevin Clay.

We began our tour in the storefront and entered the facility just before quitting time. Kevin proceeded to explain how Oneway's products are manufactured; including laser cutting, welding, and machining, which are all done on site. The powder coating is sent down the road to be done in their original facility.

Kevin then showed us how both the chucks and lathes are assembled and packaged for shipping.

We ended our tour in the back corner under the stairs in the 'factory seconds' area, where some members picked up some good deals!

We then thanked our Tour guide for his time and informative afternoon and headed back out to the storefront where wallets became lighter for many of the attendees

A good day had by all!

JUNE Meeting & BLOOPERS

June's meeting started with gathering indoors for a brief meeting, talk about upcoming events, the President's challenge for September (turn a sports related item), interest by members in a 101 Course for the Fall, and general Guild business. We then had a Show & Tell and shared some 'BLOOPERS' brought in by members for some great discussion and sharing of knowledge and learning, before going outside to the parking lot for the planned Swap Meet.



Reg Rumble - lilac root with fence wire marking through it, cracked even though it was filled with epoxy



Rob Williamson - 6" hollow form, walnut added to the bottom, minwax wipe on poly, bloopers or strategic design element?



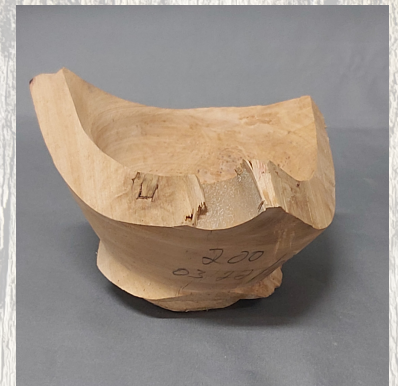
Gary Miller - 12" bowl displayed in his shop to always remind him - "the outside must be bigger than the inside"



Nick Henshaw - 9.5 inch bottomless bowl bloopers/design opportunity, finished with butcher block oil



John Rice - this high-walled bowl was turned very thin, ended up splintered, glued back together and refinished



Tim Schinkel - shared with us these 3 pieces. To the right, the three point dish cracked/broke tip, in the middle is a piece of lilac that even though was dry, cracked, so was filled with epoxy. The piece of Manitoba Maple on the left was from our Chainsaw demo - great discussion around salvaging wood for design elements and which are just destined to stay in the burn pile!

JUNE Show & Tell



Doug McGrath brought in both of these pieces to show us the difference in turning the same piece of wood (yes, these are from the same big piece of beautiful Red Maple Burl) either bark side down - shown on the left, and bark side up revealing the live edge and rays running down from the edge - shown on the right. Both were finished with Waterlox and are approximately 16 and 17 inches in diameter.



Paul Jackson brought in this curly ambrosia maple, thick-walled shallow bowl to share with us. The finish he used was wip on poly, then he used 0000 steel wool and Clapham's salad bowl finish.



Howard Bownern shared these beautiful crush grind salt or pepper mills that he completed recently. Mill mechanisms bought from Woodchuckers.

Bespoke Lighthouse crush grind mill - Maple with pyrography applied to represent brickwork, stones and the top to look like the light section of the lighthouse - approx. 12" tall, finished with Howard Feed-N-Wax

Maple Burl crush grind mill with gold powder inlay - finished with Hampshire Food and Toy Safe - Sheen Gloss Finishing and Microcrystalline waxes - approx. 6 3/4" tall

Maple Burl crush grind mill with silver powder inlay - finished with Hampshire Food and Toy Safe - Sheen Gloss Finishing and Microcrystalline waxes - approx. 6 3/4" tall



THE GUILD IS ON SOCIAL MEDIA

THE THAMES VALLEY
WOODTURNERS GUILD HAS
A PRESENCE ON
FACEBOOK!
CLICK ON THE LINK BELOW
AND CHECK IT OUT!



<https://www.facebook.com/Thames-Valley-Woodturners-Guild-101557104676603/>

Tops for Tots

The "Tops for Tots" initiative is an on-going challenge, initially started as a President's Challenge in June 2018, for all Guild members to generously give their time and share their talent for a great cause!

We have a collection box at the Hall so please continue to bring in your tops to donate to the Children's Health Foundation!

Please remember the guidelines for tops:

- One piece
- Minimum size. At least 1.75" (45 mm) diameter (smaller tops are a choking hazard)
- No sharp points or edges
- Sand to 400 grit
- If you are colouring them, use water-based markers only
- No finish except for carnauba wax
- No wood from nut producing trees

Calendar of events for 2022:

Date	Meeting or events	Details
January 13 th	Monthly meeting	Zoom: Demonstration by Carl Durance of Jewellery Making
February 10 th	Monthly meeting	Zoom: Demonstration by Carl Durance on Basket Illusion
March 10 th	Monthly meeting and Demonstration	Zoom: Presentation by Rick MacKinnon on Chainsaw Safety
April 14 th	Monthly meeting and Demonstration	Return to in Person Meeting at the Hall! Demo – Mark Lush: Getting the best blanks from a log
May 12 th	Monthly meeting and Demonstration	Oneway Sharpening Demo *May 27th Field Trip to One Way Facility*
June 9 th	Monthly meeting	Swap Meet/Yard Sale planned for this month!
July	Monthly meeting	No regular meeting scheduled
August	Monthly meeting	No regular meeting scheduled
September 8th	Monthly meeting	Sandpaper Information by Nicole Rumble of 3M Postponed by 1 week due to Airshow
September 15 th	Monthly meeting	Sandpaper Information by Nicole Rumble of 3M
October 13 th	Monthly meeting	TBD
November 10 th	Monthly meeting	TBD
December 8 th	Monthly meeting	TBD

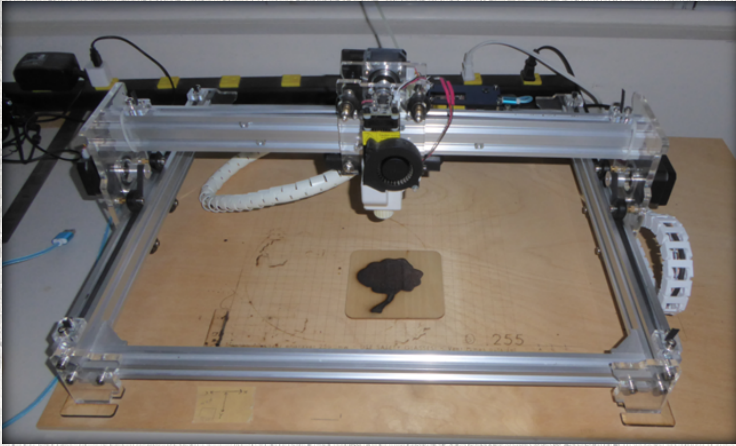
Call for Demonstrators

We are looking for people who are willing to do demonstrations. Please let the Guild's Executive know, or email info@thamesvalleywoodturners.ca

- Meetings new start time is at **7:00pm**, doors open at 6:30pm. The pre-meeting period from 6:30 and 7:00 is a great time to discuss problems or successes at the "Show and Tell" table and converse with other members.
- There may be last minute schedule changes due to weather or other unforeseen causes, if in doubt, check the website for the latest meeting info as the date draws near.
- Raffle tickets are usually available between 6:30pm and 7:00pm as well as during the break period.

FOR SALE :

Doreen Bowden is selling!! If interested in what she has, please call 519-264-2361 or arrange to go see what is available.



Price \$200

Contact: Bob Hewson,

Phone: 519-457-6555

Email: 66.bobhewson@gmail.com

Diode Laser engraver machine

EleksMaker A3 2.5 W Laser with Mana SE board

Great laser for engraving on your turning also for general engraving. "Coins" can be made of your name etc. and inserted into the bottom of your work decorations, also slate easily used.

Uses easy to use software like Gerbl (free), T2laser (free trial then \$50), Lightburn (30 day trial then \$80).

Works with any computer.

Creality Ender 3 - 3D Printer



Example of detail it can print is shown to the left. Christmas figure printed in white PLA and painted with acrylics.



The clock mechanism to the left is many precision printed parts approx. 12" wide, made from PLA.

A great 3D printer. This printer comes with several spare items, several rolls of PLA filament, one roll of PEGT, Spare bed. You can design your own pieces or download ready to print files from Thingiverse. Uses easy to use software called CURA, a free software provided by Ultimaker.

Works with any computer.



Price \$235

Contact: Bob Hewson

Phone: 519-457-6555

Email: 66.bobhewson@gmail.com

****Please send items you wish to advertise for sale to TVWGnewsletter@gmail.com****

Ads are free for members and run until you sell your item or withdraw your advertisement. To run an ad or to remove one, email Jen & Kyle TVWGnewsletter@gmail.com. Members support other members by buying or selling - good deals and at good prices! Ads when received are sent to our mailing list which cover our membership as well as surrounding Guilds. The ad is published in our newsletter until sold or removed.

Commercial "business card" advertisements are available for \$75 for insertion for one year (5 – 6 issues).

Please note: The Guild provides a means of connecting buyer and seller through these ads. It is up to the buyer to ensure the item offered is as stated and the two parties should agree between themselves as to any warranty/guarantee. The Guild does not accept any liability for any such sale.

Sales tables: Members are welcome to set up a "sales" table in the bar section/room during Swap night at our June and January meetings. There is no charge to the member for the sales table.

We issue our newsletter targeting every two months. Our newsletter is found in glorious colour on the internet at <http://www.thamesvalleywoodturners.com/>. Any newsletter photos are available to members by request to the Editor at (TVWGnewsletter@gmail.com).

Guild Advertisers:



WOODCHUCKERS.COM

416-241-8654 **SOLID WOODS WOODTURNING SUPPLIES & FINISHES** **1-800-551-0192**

50 Venture Dr., Units 4 & 5, Toronto, ON M1B 3L6

 **Ontario Wood**
The natural choice



william wood-write

penblanks.ca

shop online or call

1-877-585-0403