



Thames Valley Woodturner

A publication of the Thames Valley Woodturners Guild

(Meetings held at 2155 Crumlin Side Road, London)



Totally Turning 2017, Saturday & Sunday, April 1st & 2nd, 2017, Saratoga Springs City Center, Saratoga Springs, NY. (info: <http://www.totallyturning.com>)

AAW's 31st Annual International Symposium in Kansas City, Missouri, June 22-25, 2017, Kansas City Convention Center (info:

<http://www.woodturner.org/?page=2017KC>)

Contents

Treasury	P1
Internet sites of interest	P1
Visiting turners	P2
January meeting (triple final)	P2
January show and tell	P4
Storage space update	P4
February meeting (cabriole leg)	P5
February show and tell	P7
Election result	P9
Calendar	P10
There were no "For Sale & Wanted" ads	P11

Any member wishing to contribute content to the newsletter in the form of articles, tips, or want-ads PLEASE contact Bob Hewson (Photos, articles, photo-articles).

For a Guild info/policy sheet or mentors list, call or email Bob Hewson at 66.bobhewson@gmail.com or refer to our web site at: <http://www.thamesvalleywoodturners.com/>

Volume 20.1, January and February 2017.

Treasury

Our treasury report shows a balance of \$3154 less ~\$300 committed for the completed Oneway repair.



New or updated web sites of interest to members

To execute a search on virtually any topic you can imagine try typing your query as a question into the Google search box and see the breadth of information you can find.

I will include web sites that may be of interest to many of us as turners, woodworkers or hobbyists. The **colored highlights** are hotlinks, click them and they go directly to the website, if that doesn't work copy the link into your browser's address box.

- And you thought tops were just a simple toy. Check out this site for high price high performance metal tops. Want a simple challenge, try turning one out of brass (should weigh in about 30gm). Try turning one out of one of the hard/dense exotic woods. Make a small turning spinning base too. See how well this design stands up to what you have made in the past for the top challenges.

<https://foreverspin.com/cart>

- Find more tips like one about improved jam-chucking the AAW website in the tips library at

<http://www.woodturner.org/default.asp?page=Tips>



Visiting turners

A list of future seminars and visiting turners scheduled at neighbouring Guilds as well as planned events in London. Area Guilds encourage neighbouring guilds to attend, space permitting.

If you wish to attend make your wishes known as early as possible.

Turner	Date	Location	Fee	Confirmed
David Ellsworth seminar http://www.ellsworthstudios.com/	April 22, 2017	TWWTG	\$50- seminar with lunch	Yes
Glen Lucas seminar	April 14, 2018	TWWTG	\$50- seminar with lunch	Yes

For sessions held in London see Bill Orlowski (in Jackie's absence) to sign-up and/or buy your advance ticket(s).



January Meeting

Eric Deckert was the January demonstrator of a gorgeous box with a triple finial and twisted support.

At first look this is a really wild design, where do you start? Closer examination says yes, complex, but really it is made up of a number of elements (7 in all). Elements are all within the capabilities of most members.

The elements are:

- The box, a lid/top and a bottom.
- The support for the box (a variation on the barley twist).
- The base.
- The decorative elements sprouted from the legs of the twisted support.
- The triple support for the finials growing out of the lid/top of the box.
- The three finials.

The photos that follow detail the elements and the way Eric developed them as a simple progression.



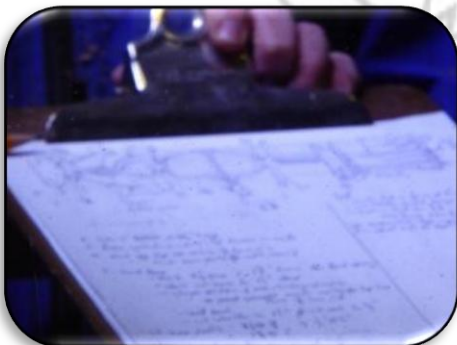
The beginning, a billet of butternut and the project's target



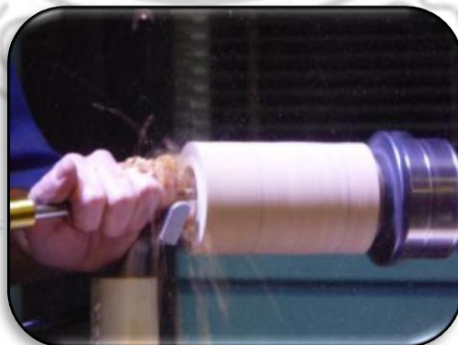
Turn to final OD, turn tenons both ends and split for top and bottom



Final cut using a saw



A pre-planned project guide with dimensions and notes. Good for a complex project and essential if you plan a repeat



This is the box bottom, the "twist" and the base



Shaping of exterior as well as the bead detail.



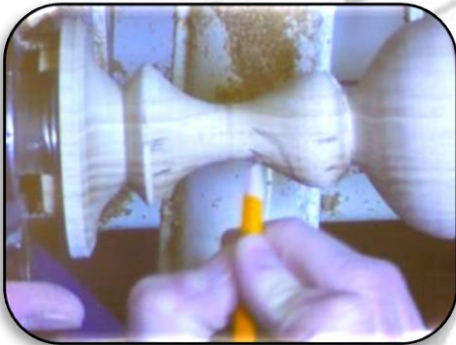
Home built depth guage to ensure you don't go too deep



Final sanding, this is when you can complete the finish too



Shaping the "twist and base profiles



Draw the twist elements in preparation to cutting them out (for barley twist detail do a Google search or refer to Bruce Gordon's projects on barley twists of a few years back).

The twist elements and base are sanded and finished.

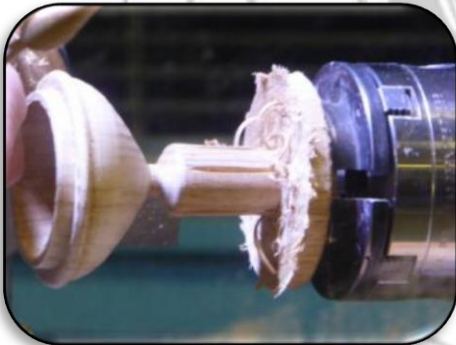
Once the twist is done then the decorative buds and support wire are made. The wires are carefully drilled into the "twists", inserted, and glued in place. The buds are turned, finished, fit to the wires and glued in place.

Next is the lid/top of the box and the triple finial. The upper half of the box is done as normal, but a hole is prepared for the base's tenon of the triple finial and is shaped with hand tools to provided the base and posts to accept the three finials

Care is taken in finishing the posts to accept the finials and add a little mystery as to how they were made.

The finials are made normally except that instead of a tenon at the bottom they have a mortice and the finished finial is slipped over the post, carefully sanded and finished.

The finials are made in different lengths but with similar profiles to add interest. The grains are matched to help disguise the way they were made and assembled.



After the box's top is shaped the shaping of the multi-finial base begins using a veining hand chisel



After the box's top is shaped the shaping of the multi-finial base begins using a veining hand chisel. Time spent ensuring a good base and round flowing posts aid in the mystery.



The final project assembled, but not finished. Well done!

If you want more detailed info Eric has a step by step instruction as well as a storyboard for this project, drop either of us a note and we will send it to you



January Show and Tell



Eric's triple finial box demo project
(third finial is partially hidden in this view)



Mike Malone's small birdhouse with
classy wrap-a-round porch



Gary Miller's "2x4 challenge" entry,
better late than never. Spruce, dyed and
finished with multiple coats of lacquer



Mike Malone's stave construction oak
beer stein, 1st attempt, Mike says he
needs to work on the epoxy joints which
are slightly open.



Paul Zerkel (Detroit club visitor) 7"
Spalted beech bowl with a wax finish



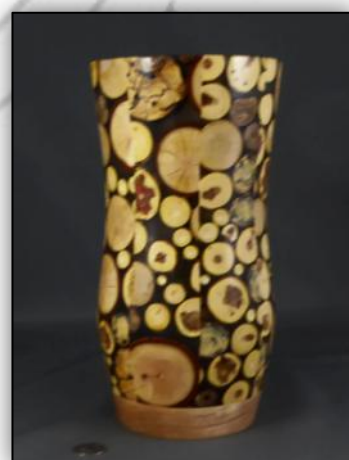
Paul Zerkel (Detroit club visitor), a
platter with dyed color and black music
notes, nice effect!



Paul Neuberger (Detroit visitor).
Sycamore with decorative texture and
finish.



Paul Guilbeault, Vase made from offcuts
and strandwood.



Paul Guilbeault, vessel turned from
staves (staves of epoxy and branch
cross-sections)



Ruby Cler, ebony and beech. Not really sure how to describe this one.



Ruby Cler, beech vessel



A question of scale. Large birdhouse is stave construction, miniature is conventional, by Paul Jackson



Off-centre boxes of beech, turned by Ruby Cler



Black spruce and oak, shellac wax. By Joe Wallace



Cherry and purpleheart ring holder by Joe Wallace

Storage Space

A more useful storage space for guild lathes and equipment is in the works with permission of the Air Force Club. It will be built by the members/exec during the spring. Plans have been submitted for approval.

February meeting

Gary Miller turns a cabriole leg, an exercise in multi-axis turning as covered by the following photos. Gary turned a cabriole at an earlier meeting and has a short write-up on our website under "techniques". He has also prepared a more detailed hand-out of this month's demo, again, to be found on our website under "techniques".



Layout of centers for the top of the cabriole leg turning



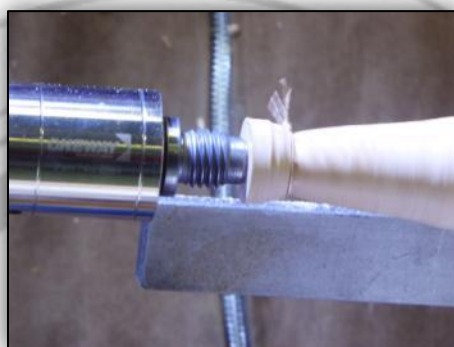
Centers for the bottom of the leg



"Exploded" section after bandsawing (always a satisfying exercise when the main piece is revealed).



Turning the off-center foot



The foot



Recentering for next step



Shaping



Shaping the foot. Turning lots of air.



Sanding



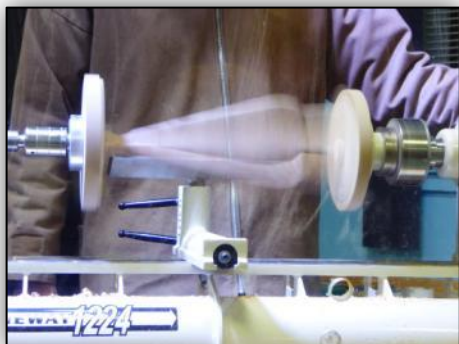
Another example, note the large unturned ends to facilitate the "off-centers" of this cabriole leg



Once positioned you can see that very little will be turned.



Be CAREful turning!



Turning a LOT of air. You really need to pay full attention!



Full face protection is a must



Hand work with a spoke-shave, note jig to hold leg for extreme off center.

February Show and Tell



Lidded container by Bernie Hrytzak. Walnut base, gilded trim and interior. Blue finish is acrylic paint.



Interior view shows the gilding



Multi-centre turning by Dave Hudgel



Dave Hudgel, natural edged vessel, bleached



Dave Hudgel, turned natural edge bowl, juniper (red-cedar), natural edge, no finish



Dave Hudgel, natural edged vessel, bleached



Mallets, turner not identified



*John Rice, spalted maple and epoxy,
4.5" diameter*



*John Van Kessel, tiger maple - great grain!
—sorry John poor focus.*



Natural edge bowl - turner not identified



*Dyes pastel blue vessel by John Van
Kessel*



*Joe Wallace, maple bowl finished with
Shelowax*



*Beautiful wooden plane made by a friend
of Joe Wallace*



*Peter Smith, trivet made from oak and
walnut with an oil finish*



Election of officers

Elections were held at the February meeting, delayed due to the length of the January demo.

There was one new nominations for the executive offices. The existing executive were polled and were asked if they would serve another term, most agreed and were acclaimed for 2017.

Gary Miller, John Calver, and Jackie Mornigstar have resigned from the executive and we extend a ***heartfelt thank-you*** to them for their contributions to the Guild as members of the executive.

Your Guild executive for the 2017 term is:

President is Paul Newton (519-883-0928, paul.newton@architext.ca

Past President is Eric Deckert (519-432-6545), emdeckert@gmail.com

Treasurer is Bob Fenn (519-455-7436) ww-wt@rogers.com

Secretary/Newsletter editor is Bob Hewson (519-457-6555), 66.bobhewson@gmail.com

Video librarians are Bruce Smith (519-432-5555) and Roy Phillips (519-471-3707)

Webmaster is Eric Deckert (519-432-6545), emdeckert@gmail.com

A/V coordinator is Scott Beverley (519-681-5565), sbever1073@rogers.com

Program committee members are:

Bill Orlowski (519-473-5078) Bill.orkowski@outlook.com (collection of money for seminars and dues)

Carl Durance (519-534-1540) lazy.bee@bmts.com

John Scott (519-641-2522) irishturnings@yahoo.ca

The executive would also like to thank the many other un-named members who help in the set-up and take-down of the meeting room, clean-up, supply refreshments, and the many other things which make the guild operate smoothly.



Calendar of events

2016-2017 season scheduled meetings and other events. There may be schedule changes, if in doubt check our website for the latest meeting info as the scheduled time draws near. Your input is valued in the development of our program.

Date	Meeting or events	Shows/events/comments	
September 8th	Monthly meeting	Judging the 2 x 4 Challenge. Hollowing demo – Paul Newton and Bob Fenn to demo.	
Sept 30th – Oct 2nd	Woodstock Woodshow	We will be looking for several demonstrators to do stage demos at the fair. Any volunteers?	
October 13th	Monthly meeting	Bowl demo by Paul Newton Demo/meeting with texturing systems. Demos and then hands-on by members	
November 10th	Monthly meeting	Bird house and an acorn ornaments – Bob Fenn	
December 8th	Social/ ornament exchange	Ornament exchange – Please think about participating, it would be nice to have more people exchange ornaments. A small demo will be ongoing on the “One Way” during the meeting. Food would be appreciated as well. Significant others are invited too.	
December 10	Novice Workshop	Basic lamp spindle and a base. This demonstrates spindle and faceplate turning. Wood blanks will be supplied (6 lathes 6 people). This will be an all-day workshop geared towards our novice turners. Cost \$25, bring your own lunch. Bring your own tools. Sign up now!	
January 12th	Monthly meeting	As follow-up to the recent survey Eric will turn a box. A Box Challenge, turn something to fit into the 6" box.	
February 9th	Monthly meeting	A Cabriole leg. Gary Miller will demonstrate this technique.	
March 9th	Monthly meeting	A dizzy bowl. Carl Durance will demonstrate. See: http://www.gbwg.ca/memberGallery.php?memberID=1&pictureList=303&pictureNumber=1	
April 13th	Monthly meeting	Judge the 6" box challenge. Bob Dyck from the Grey/Bruce guild will do a Wood and Epoxy Platter, similar to the style of Marilyn Campbell, For examples of Bob's wood and epoxy platters, see: http://www.gbwg.ca/memberGallery.php?memberID=83&pictureList=169.170.174.175.186.187&pictureNumber=1	
April 22, 2017 8:30 am start	David Elsworth Seminar	Visit by David Ellsworth seminar including lunch.	
May 11th	Monthly meeting		
June 8th	Monthly meeting		
Ideas	Program ideas, member input is always welcome	<ul style="list-style-type: none"> -Guest turners or seminars. -Design? What makes a “good” turning into an “outstanding” turning? -Metal spinning -A safety night (discussion/panel) -A seed pod turning. -Homebuilt kiln/ drying wood 	<ul style="list-style-type: none"> -Basic drying of wet wood -Make a home drying cabinet -Shear scraping -Inlace -Finishing -Chucking and holding -Segmentation -Jigs and fixtures.

Shaded entries are past meetings, listed for reference

Note: Meetings start at 7:30, doors open at 7:00. The open period from 7:00 and 7:30 is a great time to discuss problems or successes at the “Show and Tell” table and converse with other members. **Raffle tickets** and the library, are usually available between 7:00 and 7:30 as well as during the break period.



Items wanted and for sale

Ads are free for members and run until you sell your item or withdraw your advert. To run an ad or to remove one, call or email Bob at 519-457-6555 or 66.bobhewson@gmail.com. Members can support other members by **buying: good deals and at good prices!** Ads are first emailed to our mailing list, if not sold the ad is published in our newsletter as well.

Commercial “business card” type advertisements are available on this newsletter for \$30. Insertion in 5 - 6 issues per year.

Please note: The Guild provides a means of connecting buyer and sellers through these ads. It is up to the buyer to ensure the item offered is as stated and the two parties should agree between them as to any warranty/guarantee.

Members are welcome to set up a “sales” table in the bar section/room available before the meeting starts.

We issue our newsletter on a non-date-specific schedule, generally every two months. Our newsletter is found on the internet at <http://www.thamesvalleywoodturners.com/> in glorious **colour**.

Remember, this is a no charge feature of the Guild.

