



Thames Valley Woodturner

A publication of the Thames Valley Woodturners Guild

(Meetings held at 2155 Crumlin Side Road, London)



Turning events, Wood shows, competitions at your Guild, in our region, and farther afield

-Grey Bruce Guild Symposium and workshops

Aug15-16 in Port Elgin. Featured turners are Marylyn Campbell, Carl Durance, Dave Bell, and Tom Warrick.

-President's challenge, September meeting, details elsewhere in this newsletter

-Maycourt Sale in November

-Western Fair, TVWTG Guild demonstration Sept 12 - 14

-Woodstock Wood Show in October 2, 3, 4.

Contents

Treasury	P1
Internet sites of interest	P1
President's challenge	P1
SPAM caution	P2
Grey Bruce symposium	P2
Western Fair	P2
Visiting turners	P2
April meeting (Cardboard turning by Paul Guilbault)	P3
April show and tell	P4
Drop-in night	P6
May meeting (multi-axis bowl by Paul Newton)	P6
May show and tell	P7
Looking for a smaller lathe?	P8
June meeting/top challenge evening	P8
June show and tell	P8
"For Sale" & "Wanted" ads	P9
Calendar	P8

Any member wishing to contribute content to the newsletter in the form of articles, tips, or want-ads PLEASE contact Bob Hewson (Photos, articles, photo-articles).

For a Guild info/policy sheet or mentors list, call or email Bob Hewson at 66.bobhewson@gmail.com or refer to our web site at: <http://www.thamesvalleywoodturners.com/>

Volume 17.3*, April-May-June 2015

Treasury

Our treasury report shows a balance of \$4452 at the time of the May executive meeting. Since then we have purchased 2 new Delta lathes for the guild leaving a balance of approx \$2,450.



Interesting new or updated web sites

Google, Yahoo and MSN host newsgroups that cover virtually any topic you can imagine. Try typing your query as a question into the Google box and see the breadth of info you can find. I will also try to include appropriate web sites that may be related to meeting demos. Most references are hotlinks, click them and go directly to the site if you are on the net.

- Here is a neat idea for a Turned sealed pill bottle from Woodturning online. Keeps pills available but hidden while still providing protection to the pills <http://www.woodturningonline.com/assets/Projects/Turned-Pill-Bottle.pdf>
- Woodturning on-line has videos, tool testing, and supper projects <http://www.woodturningonline.com/index.php>
- Check out the Highlander for summer projects <http://www.thehighlandwoodturner.com/>
- An intriguing project /techniques for Christmas ornaments combining scroll saw and turning by Dan Douthart. The 1st video is an intro explaining the technique <https://www.youtube.com/watch?v=5jYmMAJjEEk>

Specific projects and detailed techniques are covered in the following videos

- <https://www.youtube.com/watch?v=rYG5ftaSu-o>
- <https://www.youtube.com/watch?v=mBCJX8Bjek0>
- <https://www.youtube.com/watch?v=w6Pk5rAG75U>



President's challenge*

President Paul has a new twist on a guild challenge for you to work at during the summer, a Collaborative box turning "Rough and Smooth".

- Collaborative means 2 or more members will work on the box.
- The collaborative "team" may only enter one piece.
- A member can however participate in more than one collaboration team.
- The box must be lidded, turned from a single piece of wood.
- The piece must be turned from a piece of wood of 4" x4" x 6" maximum.
- Multiple wood species are allowed.
- The piece must be finished in a finish of your choice.
- The piece must have both "rough" and "smooth" elements (you interpret the meaning, but be prepared to explain your interpretations to the judges).
- Display and judging will be at our September meeting.

The President's challenge will be judged at the September meeting, so you have the entire summer to design and turn it. There are two changes made from original version shown at the May meeting they are a) remove word "species" from "single species of wood" and b) change "Any species of wood is allowed" to "Multiple wood species are allowed".



Spam caution

We all hate spam and our various service providers define spam in various ways, but, these definitions can be a problem for those sending email to members of groups such as the guild.

For those of you that trusted us with your email addresses we limit their use to guild related items, we never give you names to outsiders, and the full list is maintained by me, the secretary.

Several months ago we were having a lot of rejects of our mailing list when sending it which resulted in me changing how I sent my mailings.

However, all is not so smooth in the electronic world. Some service providers still "censor" your email by marking "large" mailing lists (such as ours, which is 80+) as SPAM, and move the message automatically to the "SPAM" folder in your email. It is wise to check your SPAM periodically to view any of the messages that you may wish to read. If you find a sender such as me and your TVWTG messages in the SPAM folder there is always the option to mark that sender as legitimate and so if marked it will go into your INBOX next time.

Several members did not receive the notice of the "safety shield" buy which brought the matter to the fore again.

It is also an opportunity for those who are not currently on our list to get on the list by providing us with your email address.



Grey Bruce Symposium and Workshops

The Grey-Bruce guild is holding a Symposium and workshops on the August 15th – 16th and we are all invited.

Grey-Bruce Woodturners Guild (GBWG) is hosting the first-ever **Grey-Bruce TurnFest 2015 event** in the town of Port Elgin, including:

- 1) Grey-Bruce TurnFest 2015 Exhibition** An exhibition open to the public showcasing exquisite woodturning by members of woodturning guilds across Ontario, running from Friday, August 14th through Sunday, August 16th.
- 2) Grey-Bruce TurnFest 2015 Symposium** A one-day woodturning symposium open to members of Ontario-based woodturning guilds on Saturday, August 15th, featuring presentations, instant gallery, wood and tool sale, and ad-hoc demonstrations.
- 3) Grey-Bruce TurnFest 2015 Workshops** A set of full-day hands-on woodturning workshops on Friday, August 14th and Sunday, August 16th.

...and, as a member of an Ontario-based woodturning guild, you are invited to participate in this inaugural woodturning event! Refer to the GBWG web site (www.gbwg.ca) for further information on how you can participate in **Grey-Bruce TurnFest 2015**, and to register for the symposium and/or workshops. **The symposium has limited enrolment, and thus will require pre-registration.**

Hope to see you there,

Carl Durance,

GBWG President

For further info and registration please refer to www.gbwg.ca as noted above.



Western Fair participation

We will be holding a Guild demonstrations at the fair, Sept 11 – 12. We need volunteers to set-up, take-down, demonstrate, and talk to visitors. This is a heavy schedule, so if you can volunteer for one or more shifts of 4 hours it will help.

We need turnings to display and we will have a **People's Choice Award** competition as well.

A few people have signed on, but more are needed. If you can assist please email me during the summer and we will add your name to the list. One of the executive will be in touch to stitch a time with you as September approaches.

In addition to volunteers we need examples of turning to display and new turning for you to enter into our "People's choice" competition (you can enter the same new turning into the Woodstock show too).

The fair will have a juried show for arts, sculpture and woodworking (including turning) with \$75, \$%0, and \$25 prize in each section. Articts nay enter more than one section, buut only one entry per section. Entry fee is \$5 for each entry.



Visiting turners

While too early to confirm, we have a couple of exciting turners we expect to have visit us in 2016. As details firm up we will keep everyone informed and up-to-date.

For the interest of members we continue to list future seminars and visiting turners scheduled at neighbouring Guilds as we learn of them as well as planned events in London.

These include demonstrators that WGO, GHWG, TVWG and other area Guilds have either scheduled or are making arrangements for. The Guilds have generally said that members of other clubs are welcome to attend, space permitting. If you wish to attend make your wishes known as early as possible.

Turner	Date	Location	Fee	Confirmed
Michael Mocho http://www.mmocho.com/	October 18, 2015	Golden Horseshoe guild. Perhaps interested members could travel to GH in Burlington	\$45 est	Confirmed
Two world class turners	2016	TVWTG London		Details being worked upon

Please let Gary Miller know if you want to attend out-of-town sessions, he will verify that there is space and confirm the fees.

Carpooling may be arranged if there is sufficient interest for out-of-town seminars, co-ordinate with Gary Miller.

For sessions held in London see Jackie Morningstar to sign-up and or buy your ticket(s).



April Meeting

April's demonstrator was Paul Guilbault who demonstrated his different technique of cardboard wood lamination bowl. After bring in several sample of bowls turned from this unusual material combination Paul agreed to demonstrate the technique to the Guild.



Paul Guilbault describes a cardboard laminate element



The cardboard is conventional "box" cardboard laminated with carpenter's glue. Saturation is important as it adds an element off strength. Illustrated are three laminate contstructs thin, medium and thick.



Shapes are turned the same as with any wood, although a lighter touch is necessary as the laminate is structurally weak. Note too the use of plastic foam sheet to provide a friction grip at the headstock end.



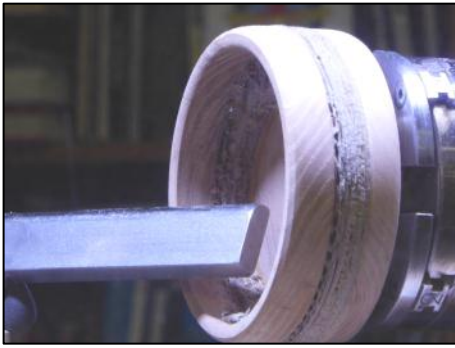
Turning is with tailstock and a friction hold at the headstock (the yellow material is a thin craft foam available in sheet form).



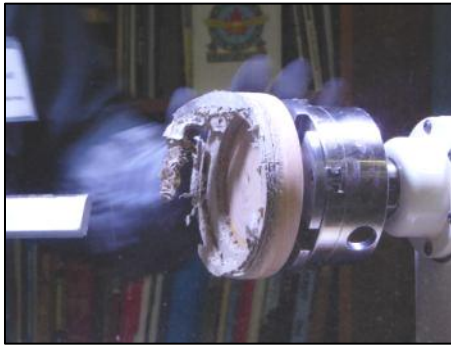
Yellow material is the craft foam



Hollowing out



Cardboard exposed



As noted, material is not high strength and separation occurred



A completed bowl of bamboo and cardboard

While the result of the demo was not as expected, we do know it works (see example under April's show and tell) and it also points out that with experimentation often is a hard road to travel!



April Show and Tell



Gary Miller, African blackwood & aluminum coffee tamper, finish - none, 2" x 3 1/2"



Dave Bell, pine cone encapsulated in Alomalite with lacquer finish, 6" tall.



Carl Pardy, apricot funnel for bird seed



Doug Magrath, salt and pepper mills for Studio Tour



Mike Malone, maple & walnut mini-houses, linseed oil finish, 6".



Dave Bell, Spalted maple and Alomalite, laquer finish, 8" dia



Paul Guilbault, shallow square bowl of bamboo and cardboard



Paul Guilbault, shallow square bowl blank of bamboo and cardboard. Shows laminations



Geoff Scott, Cherry mortar and pestle, oil finish, 6" x 3"



Geoff Miller, Cherry root burl, antique oil finish plus Beall buffing treatment



Geoff Miller, Cherry root burl, antique oil finish plus Beall buffing treatment



Geoff Miller, Cherry root burl, antique oil finish plus Beall buffing treatment



Joe Wallace, olive with "True oil" finish



Joe Wallace, maple finished with "True oil"



Carl Pardy, Antler bullet pen, sanding sealer and C/A finish for the antler



Doug Magrath, vessel for Studio Tour



Doug Magrath, natural edge vessel for Studio Tour



Drop in Night (April 30)



Bob explains the details of using the Oneway Wolverine jig



Drop-in night!



Jeanne starting on a top



Bob explains the details of using the Oneway Wolverine jig



Working on tool technique for fine detail i.e. a finial



Sharpening technique

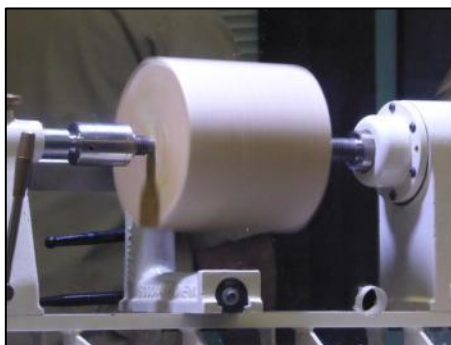


May meeting

Paul Newton was the demonstrator this month and turned a Double Axis Square bowl. While a number of photos from the demo are included here, Paul has prepared an excellent handout which has been included on our Website in the "Tips and tricks" section <http://www.thamesvalleywoodturners.com/tips.html>



Ready to Rock and Roll



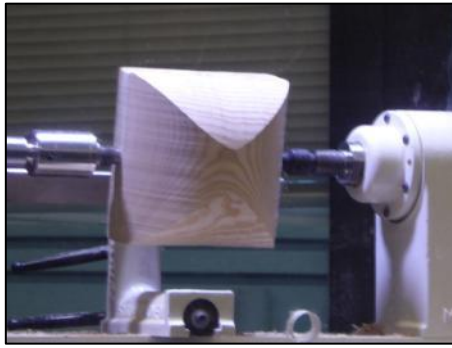
This project starts with a cylinder and a single axis turning



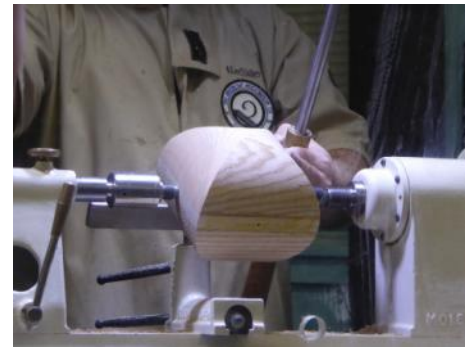
Measure to determine OD which will become 2nd axis



Ready to re-turn. Thinking out of the box!



Taking shape



Maintain symmetry



Jig to hold shape while cutting using the bandsaw - BE CAREFUL!



Custom made faceplate holding jig



Fasten with screws and tough-hi-tack hot melt glue



Fastened into place with jig and held additionally by tailstock



Carefully cut interior, no hoggin' the wood, remember how it is held!



Detailing the core



May Show and Tell



Mike Malone, pigs in Walnut and ash, piglets in cherry



Adam Hammil, lacquer finish segmented bowl



Adam Hammil, lacquer finish segmented bowl



Joe Wallace, beech finished with "treoil"



Joe Wallace, beech finished with treoil (the small dark marks are from an insect that bored into the tree)



Dave Bell maple, Corian, and Lualite



Dave Bell, silver maple 6" reconstructed platter, unfinished



Dave Bell, 6" ash reconstructed platter, maple and epoxy, unfinished



Bruce Gordon, 15" pink chestnut, tung oil finish



Looking for a good smaller lathe?

The Delta variable speed lathe that several of us have had is a great mid sized lathe that while available in Canada a few years ago then disappeared, has now returned and is available through Wellbeck Sawmill in Durham, priced under \$1,000. If you are in the area or in the market for a lathe this one is worth a look, and particularly during their summer woodshow in August <http://www.welbecksawmill.com/wood%20expo.htm>.

Your Guild will be adding two of these lathes to our tool inventory to make future Guilds training events more "hands-on".



June meeting/Top challenge

June's meeting, the last before our summer break was a low-key fun evening Top Challenge. Tops were judged on turned presentation as well a performance. Performance was in two categories, finger spins and assisted (string assist). Performance was based on spin time of the best of two tries.



Gathering for the spinning competition



It's the details that count!



... or the concentration! "Spin baby, spin!"



Won't this ever stop?



I keep telling you, It's the body-english that makes it go...



Bernie's launch-



Look at that sucker go!



Discussing the finer design points



Concentration helps eh Jackie?



Al, you need a longer arm for the string assisted launch



String assisted performance: 2nd & HM
Bernie Hrytzak, 3rd Al Tammen, Geoff Miller
1st



Design-string assist: Doreen Bowden 2nd,
Bruce Gordon 1st, Geoff Miller 3rd



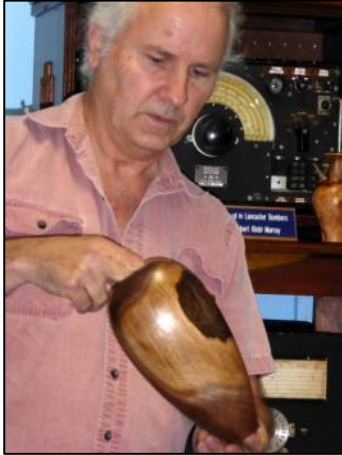
Hand launched: Carl Durance HM, Eric
Deckert 3rd, Jackie Morningstar 2nd, Geoff
Miller 1st



Design-hand launch: Doreen Bowden HM,
Gary Miller 3rd, Carl Durance 2nd, Eric
Deckert 1st and 3rd



June Show and Tell



Carl with a turned walnut vase



A turned vessel, painted in acrylics (by Bruce Smith's daughter). An unique "finish"



Doug Magrath discussing a turned burl



Items wanted and for sale

Ads are free for members and run until you sell your item or withdraw your advert. To run an ad or to remove one, call or email Bob at 519-457-6555 or 66.bobhewson@rogers.com. Members can support other members by **buying: good deals and at good prices!**

Commercial "business card" type advertisements are available on this newsletter for \$50. Insertion in 5 - 6 issues per year.

Please note: The Guild provides a means of connecting buyer and sellers through these ads. It is up to the buyer to ensure the item offered is as stated and the two parties should agree between them as to warranty/guarantee.

Members are welcome to set up a "sales" table in the bar section/room available before the meeting starts.

We print on a non-date-specific schedule, generally every two months. Our newsletter can be found on the internet at <http://www.thamesvalleywoodturners.com/> for viewing in glorious **colour**.

For sale: I make and sell cutters for the Stewart system and or boring bars. They are made of hi-speed steel. Available in three sizes, prices are \$15, \$20, & \$25.

Call Mario Moran at 519-336-0550, or see him at the Guild meeting or email mario.ada@sympatico.ca

For Sale

-Sears Craftsman 13" 5 speed drill press. \$200.00

15+ years old but in excellent condition.

-Craftex 7"x8" metal lathe. \$600.00

Less than 3 hours use.

Upgraded with quick change tool post.

This lathe can be used for woodturning.

-Contact:: John Calver, phone (519) 455-6998

johncalver75@gmail.com



2014-2015 season scheduled meetings and other events. There may be changes as the year progresses, if in doubt check our website for current meeting info as scheduled time draws near. Your input is valued in the development of our program.

Date	Meeting or events	Shows/events/comments	
September 4 th , 2014	Monthly meeting	A turning from a 2" x 4" x 8 ft construction grade spruce challenge. A bangle/bracelet and demo of his detail cutters and piercing jig by John Calver. Please bring a recent turning for the "Show and Tell"	
October 9 th	Monthly meeting	<u>Note date change</u> due to Wood Show. Ruby Cler will (tentatively) demo eccentric turning.	
November 6 th	Monthly meeting	Ornament demos (short/quick demos by Bob Fenn, Carl Durance and Joe Wallace)	
November 20 th	Woodturners' "Drop-In" Night	Cancelled due to bad weather Bring your own wood, bring your tools to learn to correctly sharpen, practice and use. Free to members and ANYONE is welcome. Members only may turn, not guests.	
December 4 th	Monthly meeting	Christmas social and Christmas exchange of turned items	
January 8 th 2015	Monthly meeting	<u>Note date change due to New Year holiday, and we continue from here as the 2nd Thursday of the month.</u> Paul Newton will turn a lidded 3 sided box (off-center turning). PDF handout on website.	
February 12 th	Monthly meeting	A twisty box by Gary Miller. A "Box" Challenge.	
March 12 th	Monthly meeting	Dave Hudgel will demonstrate an off-center/multi-axis turning.	
April 9 th	Monthly meeting	Paul Guilbault will demonstrate his paper/cardboard bowl turning technique.	
April 30 th	Woodturners' "Drop-In" Night	Rescheduled Open 7:00. Bring your own wood, bring your tools to learn to correctly sharpen, practice and use. Free to members and ANYONE is welcome. Only members may turn, not guests. (<i>Scott will be the go-no-go guy, phone 519-681-5565</i>)	
May 14 th	Monthly meeting	Paul Newton will turn a 4 sided bowl.	
June 11 th	Monthly meeting	Spinning tops challenge, (rules to be announced). Bar may be opened.	
July - August	Summer break	Summer break. Have a fun safe summer!	
August 15 - 16	Symposium	Grey-Bruce TurnFest 2015 Symposium/Workshops	
September 10 th	Monthly meeting	President's challenge, a collaborative box created by 2 or more members (details elsewhere in the newsletter.	
September 11 th -12 th	Western Fair	Guild demonstrations at the fair, Sept 11 – 12. We need volunteers to set-up, take-down, demonstrate, and talk to visitors. This is a heavy schedule, so if you can volunteer for one or more shifts of 4 hours it will help. We need turnings to display and we will have a People's Choice Award competition as well.	
October 2 nd – 4 th	Woodstock Wood Show	Guild demonstrations at the Show. We need volunteers to set-up, take-down, demonstrate, and talk to visitors. This is a full schedule, so if you can volunteer for one or more shifts of 4 hours on one or more days it will help. We need turnings to display and we will have a People's Choice Award competition as well.	
October 8 th	Monthly meeting		
November 11 th	Monthly meeting		
December 10 th	Monthly meeting	Christmas social and Christmas exchange of turned items	
Ideas	Program ideas and suggestions for guest turners. Member input is always welcomed by your committee	-Guest turners or seminars. -Design? What makes a "good" turning into an "outstanding" turning? -Metal spinning -A safety night (discussion/panel) -A seed pod turning. -Homebuilt kiln/ drying wood	-Shear scraping -Inlaid -Basic drying of wet wood -Wine stoppers -Make a home drying cabinet -Chuckling and holding -Segmentation

Note: Meetings start at 7:30, doors open at 7:00. The open period from 7:00 and 7:30 is a great time to discuss problems or successes at the "Show and Tell" table and converse with other members. Raffle tickets and the library, are available between 7:00 and 7:30 and the break period.

Please wear your name tags so fellow members match more names to faces.

