



Thames Valley Woodturner

A publication of the Thames Valley Woodturners Guild

A chapter of the AAW



Volume 13.5 November/December 2011

Turning events, Wood shows, and competitions in our region and farther afield

January 27 - 29, 2012: Hamilton Wood Show, at the Canadian Warplane Heritage Museum

March 16 - 18, Kitchener Woodworking Show, Bingeman Park

April 15 -16, Doug Fischer seminar on Sunday and a workshop on Monday. To reserve either or both events see Bob for the sign-up sheet

Contents

Treasury	P1
Internet sites of interest	P1
Book Review	P1
Jimmy Clewes seminar	P1
New member(s)	P3
November meeting – Gilding	P3
December meeting – social/tools/challenge	P5
President's challenge	P5
Ornament exchange	P6
Show and tell December	P7
Visiting turners	P7
Show and tell – November	P7
Elections	P8
Calendar	P9
"For Sale" & "Wanted" ads	P10

For a Guild info/policy sheet or mentors list, call or email Bob Hewson at 66.bobhewson@rogers.com or refer to our web site at: <http://www.thamesvalleywoodturners.com/>

Treasury and Dues

We have ~\$4600 as of Dec 31. This includes monies collected for the upcoming seminar.

If you have not paid your \$35 annual dues, they are now overdue; you can mail them to Bob Fenn at 49 Susan Ave, London, NSV 2G1.



Interesting new or updated web sites

Google, Yahoo and MSN host newsgroups that cover virtually any topic you can imagine. Try typing your query as a question into the Google box and see the breadth of info you can find.

Doug Fisher's site at <http://www.douglasfisher.com/index.html>

An interesting short film on metal spinning by Penn State

http://www.pennstateind.com/store/metal-spinning.html?utm_source=emailpromo&utm_medium=email&utm_campaign=15off_70_products_november



Book review

I was at the library before Christmas and spotted a recent addition titled "**The Ultimate Book of Pens**" published by H F Ullmann. It made an interesting read over the holiday break. A large "coffee table" book of excellent quality and printed in an unusual 3 column format, 1st in English, the 2nd in German, and the 3rd in French. Excellent commentary and beautiful photos throughout this book covers the early history of writing instruments from the cave dweller to today.

A portion of the book covers the current and historical pen makers and their masterpieces.

The book is 498 pages in length and worth a read (ISBN 978-3-8331-5099-9).



Jimmy Clewes seminar

Jimmy's seminar consisted of several projects. The 1st a square winged box, 2nd and 3rd an African drum box with an applied insert with silver inlay, and 4th a shallow dyed bowl3rd

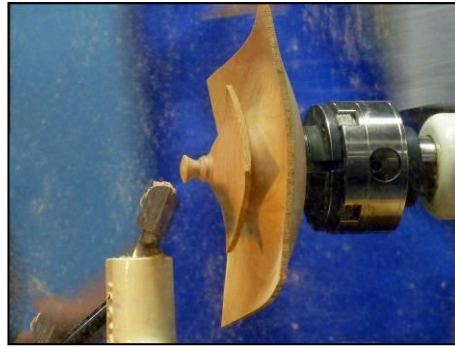
Things I picked up from Jimmy Clewes' demonstrations

- He turns fast, he says it is smoother and enables him to remove wood with lighter cuts – Observation: I have never seen anyone remove wood with the Guild lathe as quickly and effortlessly as Jimmy did!
- 3 point tool control. The tool's handle, at the tool rest and his hip
- He grinds his bowl and spindle gouges with the same profiles
- He uses a Wolverine grinding jig for reproducibility and speed. Fells it is the best in the world! He uses a 46 grit stone in his grinder
- He hones the edge of his gouges with a card size diamond to minimize trips to the grinder while keeping a good edge
- When you turn a curve if it "feels good" and likely will be good
- When turning a square box etc. He will mark the tools position (with a Sharpie) on the rest to coincide with the corner of the wing
- You need accurate tenons to get accurate edges of a square/winged turning
- When sanding use all the grits, don't miss a grit, or you will have trouble sanding out the prior grit's scratches.
- When cutting the interior you will find a micro-bevel helps
- When cutting the tenon of the box cut a small "hump" to help give a "crush fit"
- He has a parting tool where the tip's cross section is angled slightly to enable the "hump" cut
- When your tool/wood screeches it is usually from too much tool overhang
- Mark your tenon so you can put it back on the chuck in the same location.

- When you mount your piece using a tenon, press into place at the center, not at the edge and you will find it runs true with less adjusting.



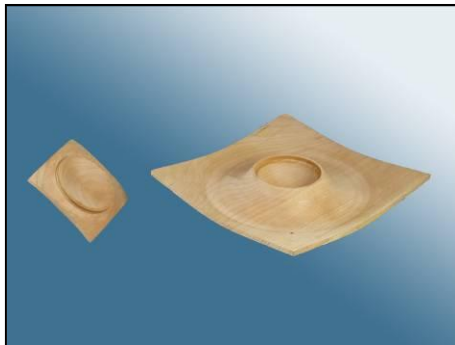
The beginning of a full day with Jimmy Clewes



Square winged box, final details



A Macassar ebony insert for the drum box. Note inset silver highlights.



The completed winged square box with lid



African drum box with insert and silver details



"Spritzing" the dye with alcohol to enable controlled blending

- Don't set the insert totally in place or you will have trouble getting it out. To help you sneak up on a fit, use a piece of dental floss to give you something to pull on to release a tight fit.
- When you have your desired fit of the lid to base slightly lubricate the tenon using a "chap stick" (it's a convenient little applicator of wax).
- Using Argentium silver (jewellery grade alloy resists tarnishing) for Makassar ebony insert. He uses 1 mm, 1.5 mm, and 2 mm wire cut to approx 0.25" length. The drilled holes are coated with medium CA glue and the wire gently tapped into place. Accelerator speed the cure. A build-up of CA is helpful in minimizing breaking out the silver as you trim it with the gouge.
- Try the silver in the form of a constellation as a feature of interest
- Once turned let the turning rest for a few days to re-stabilize.
- To ensure a good box joint slightly undercut the join of top and bottom. The joint becomes invisible!
- When sharpening your scrapers hold the tip down below the rest, you get a better edge.
- Save off-cuts for turning inserts for a future job
- Keep the points of your calipers sharp!
- Don't leave sharp edges, round the slightly giving the illusion that they are finer than they really are.
- Never leave a square edge
- Ogee – 50% convex, 50% concave
- Finds a 1/4" spindle gouge gets him out of difficulty often and is a favoured tool. It is good for finish cuts too.
- No tool is right or wrong, use the one that works
- Burnished (compressed wood) doesn't sand well
- Don't leave a rim flat, add a slight curve to draw your eye into the piece
- When working with color do the edge before hollowing out the center enabling you to cut a crisp color-free transition.
- When coloring seal the outer edge to prevent dyes from bleeding through
- Use alcohol to raise fibres for sanding, instead of water – dries faster
- Prefers alcohol based dyes
- Dyed colors will absorb at differing rates with different grain. Excess color can be toned back by careful sanding. Extra colors can be spot blended for combinations just like paints. Once the dyes have been applied and the initial blending the whole dyed area can be spritzed with alcohol and the dyes will move and blend further – this can be controlled by using a light mist, not heavy application of the alcohol.
- Jimmy's seminar was full of tips and techniques, a wonderful sense of humour made the day fly by.

Thanks, Jimmy!



New Members

Welcome to new member Jim Stamos. Please make him welcome to the Guild.



November meeting

Gilding, a demo by Bob Hewson

What is gilding? It is the process of applying gold leaf or gold paint. The material used in, or the surface produced by, this process.

The application of gilt, the gold leaf or other material with which something is gilded (silver, copper, aluminum are several), the golden surface produced by the application of gilt, something used to create a deceptively pleasing, impressive, or alluring aspect or character.

Gilding dates back some 6,000 years to ancient Egypt. Gold was the primary gilding material and the ancients always values gold. Its ability to be beaten into thin foils and adhered to stone ceramics and wood items enabled the ancients to use gold in many places whereas the use of solid gold was prohibitive. The beauty of gold was everlasting, it didn't deteriorate or tarnish so would last into eternity.

Demos of gilding can be found on many YouTube videos:

<http://www.youtube.com/watch?v=9lriuldejls>

<http://www.youtube.com/watch?v=QiP876ysbZA>

Things that can be and have been gilded: wood, metal, ceramic items, sculpture, carvings, architecture up to and including building domes (such as the Library of Congress), interior domes like the Church of the Holy Sepulcher in Jerusalem where 4,000 Square Feet of 23.5 KT gold leaf was applied.



This illustration from an ancient Egyptian tomb at Saqqara (2500 B.C.) shows the melting of gold with the assistance of blowpipes and the beating of gold with a rounded stone held in the hand

Figure 3: Illustration from an ancient Egyptian tomb at Saqqara (2500B.C.) showing the melting and beating of gold

Thickness of Gold Leaf

"Leaf metal varies from 1/8000 mm to 1/10,000 mm in thickness."

0.1–0.125 μm

Q. Assuming that a sheet of gold leaf is 1.27×10^{-5} cm thick, how many square feet of gold leaf could be obtained from 100.0 lbs of gold?"

0.127 μm

A. 480,000 square feet

μm is the symbol for micron

Gold is one of the rarest elements found on the earth and has been sought after by people since ancient times. In the massive form it is a soft, yellow metal with the highest ductility and malleability of any element. Thus one ounce of gold can be beaten out to 300 square feet. Gold nearly always occurs in pure or native form. Gold is the most easily worked of all metals. This means that it can be drawn out into fine wires or beaten into sheets so thin that they are almost transparent. At this stage the gold is just a few atoms thick.

Gold foil – is a foil made of gold

Gold leaf – is a very thin form of gold foil. Gold leaf is defined as a sheet of gold ordinarily varying from four to five millionths of an inch $1/5,000,000$ " in thickness (0.1 to 0.125 millionths of a meter or micrometers, μm [micron]). It is used especially for gilding to cover a surface as decoration. Gilding is used on furniture, walls and religious objects. Gold leaf is made by melting solid gold and mixing in other metals to achieve the desired color. The gold is hammered by hand, until it is so thin that it is nearly weightless and a slightest movement of air will cause it to wrinkle. It will melt between your fingers.

Ref: Jenifer M. Vilfranc -- 1999

Current Price of gold leaf is ~\$100 for 25 sheets 4" x 4" or 2.777 sq ft or \$36/sq ft

Due to the price of gold alternative alloy foils that give the appearance of gold are most often used by the hobbyist.

Supplies techniques, tutorials are found here for gold, silver, aluminum, and copper foils and composites.

<http://www.gildedplanet.com/index.asp>

The Gilding process

Prepare surface. It must be clean and smooth. In the case of wood, sand, clean off sanding dust and seal with sanding sealer.

Apply adhesive/size. This is a very low tack adhesive. It is applied by brush or spray. For smooth surfaces the spray is perhaps best. Adhesive "pens" are also available for smaller areas and fine line designs and some premade adhesive 'transfers' are also available.

Remember, the foil only adheres to the adhesive so if you go from a treated to a non treated area make a sharp dividing line by masking, frisket, or a fine brush. The adhesive/size is allowed to dry.

Application of foil. Both sides of the foils are useable, but are slightly different in appearance. Using both sides does give a pleasant look, but some prefer to use all one side, so scraps are not used, but rather patches are made using fresh sheets. Sheets can be pre-cut in smaller sheets or strips to facilitate application, particularly for interior contours.

The first step of application is to expose the sheet of foil and while holding the foil and its paper backing (luge), apply the foil to the site. Don't be concerned about ripples or wrinkles, they are normal. Once you have applied foil to the whole area to be covered it must be smoothed down by rubbing. Use your finger and the foil's support paper, smoothing the foil to the substrate through the paper (some like to use wax paper). This is a form of burnishing.

Excess foil will fall off. Then repeat, but this time using a very soft brush (I swipe make-up brushes from my wife). Adding small patches or repairs does not affect the final job as the material is so thin that multiple layer thickness is negligible.

Allow the gilded item to dry overnight for best results, you rinse under the tap, and using a cotton ball, gently remove any remaining excess foil, dry carefully with a soft cloth or paper towel.

Sealer. Now it is necessary to seal the foil. Using a spray lacquer is my favourite for getting a smooth coating. You can use brush-on lacquer or a water-based acrylic varnish. Several coats of are needed for protection and to ensure a smooth coat. Treat the finishing as you would any finishing operation.

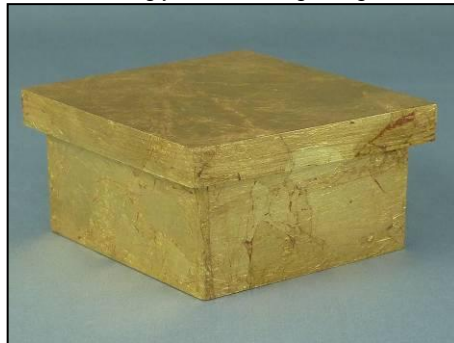
Foil thickness

- Silver foil is usually in the 3 – 4 micron range
- Gold foil is usually 2 – 3 micron
- Aluminum is 10 - 13 micron
- Copper is estimated to be 5 – 10 micron

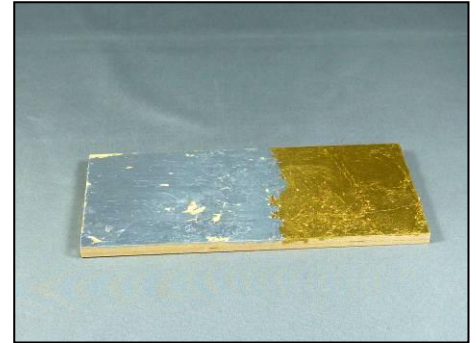
Try it yourself as a way to add a little pizzazz to a bland wooden item, large or small, inside or outside, or a pattern. Kits, foils, and adhesives are available from Mercury Blueprint on Baseline Rd. or Michael's craft stores. Two brands I have used are Renaissance by Delta and Mona Lisa by Speedball. Products are available singly or in kits beginning at ~\$30.



A gilded carved bird, gold foil body, variegated gold wings



A scroll sawn gilded pine box



Examples of silver and gold foil applied to sample of maple



Bowl carefully masked. Cavity sealed with sanding sealer and low tack adhesive applied by brush



For concave items it is best to cut the foil into narrow strips



The foil is pressed into place using your finger and the foil's paper backing



Touch up with adhesive, dry then re-foil



Excess foil is gently removed with a soft brush.



Excess foil was removed, masking removed, now the project is ready have the gilding



December meeting

Our first time Christmas social was a success with over 60 members and significant others in attendance. People's Choice ballots were handed out for the President's Challenge: a turning based on the UN's "International year of forests". The ornament exchange was held with 14 people exchanging had made Christmas ornaments.

The evening gave participants a chance to mingle, sample "goodies", and get to know each other a little better.

President's Challenge: a turning based on the UN's "International year of forests"

Gary Miller was 1st, Eric Deckert 2nd, and Jackie Morningstar was 3rd in the open class

Patrick Sutherland was 1st and Al Tamman was 2nd in the Novice.

Our December Social, ornaments and Tool sale



Checking out the ornaments



Wheelin & Dealin at the tool sale



Voting for the Challenge

President's Challenge: A turning based upon the theme "International year of forests". Nice turnings and interpretations!



Gary Miller, Open 1st



Eric Deckert, Open 2nd



Jackie Morningstar, Open 3rd



Bernie Hrytzak, Open



Patrick Sutherland, Novice 1st



Al Tamman Novice 2nd

Ornament exchange: 12 members signed up for the ornament exchange



Jackie Morningstar



Scott Beverley



Eric Deckert



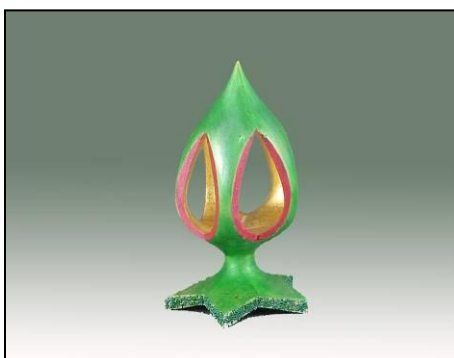
Bob Fenn



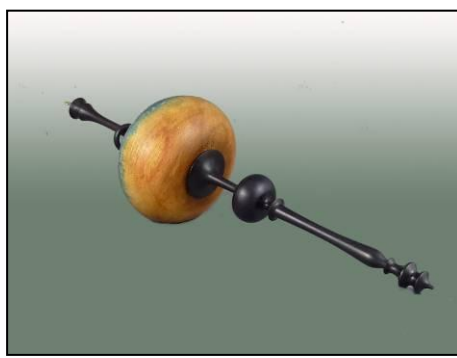
Don Arthur



John Calver



Bernie Hrytzak



David Bell



Mario Moran (with hidden box)



Keith Harvey



Doreen Bowden



Garu Miller



Bob Hewson (turned item didn't work but "12 Days of Christmas" by scroll saw did)

Show and tell for December



David Bell, colored platter a la Jimmy Clewes, spalted maple, 11", lacquer/poly oil



David Bell, Maple burl/Alumilite, CA, Jr Gent II



Bernie Hrytzak, Inside out turnings, marbled



Visiting turners

For the interest of members we continue to list future seminars and visiting turners scheduled at neighbouring Guilds as we learn of them.

These are the demonstrators that WGO, GHWG, TVWG and other area Guilds have either scheduled or are making arrangements for. The Guilds have generally said that members of other clubs are welcome to attend, space permitting. If you wish to attend make your wishes known as early as possible. Please let Gary Miller know for out-of-town sessions. Gary will verify that there is space and confirm the fees.

Carpooling may be arranged if there is sufficient interest, co-ordinate with Gary Miller. For sessions held in London see Bob Hewson to sign-up and or buy your ticket(s).

<i>Guest turner</i>	<i>Date</i>	<i>Sponsor</i>	<i>Fee</i>	<i>Contact</i>	<i>Comments</i>
Doug Fischer	Mid April , a Sunday seminar and a Monday workshop	TVWTG London	\$45 seminar and \$150 for workshop depending on number of participants	Gary Miller	Confirmed, a seminar and a hands-on workshop too

Show and tell – November



Bernie Hrytzak's Humty Dumpty, marbledized



June Simpson's miniatures in ebony and polyester



Dave Bell, walnut and Alumilite resin



Dave Bell, pen with blue Lumalite filler



Carl Durance, red oak, finished with tung oil



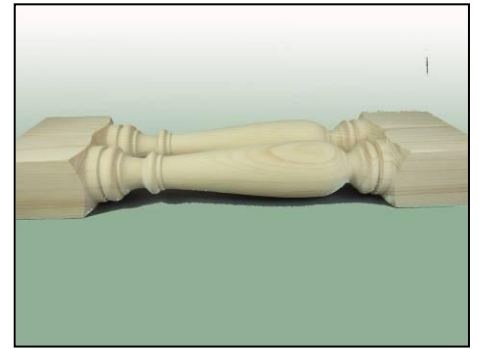
Carl Durance, 9" cherry bowl, tung oil finish



Dyed in the style of Jimmy Clewes, turner not identified

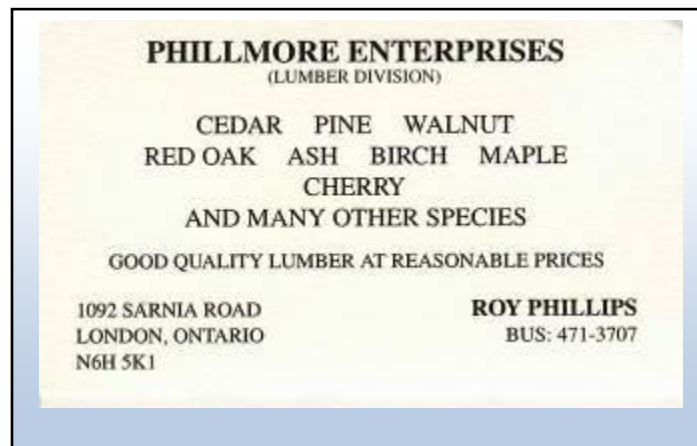


Bowl, turner not identified



Balusters by Paul Jackson

Please note: If you fill in the little card available on the Show and Tell table we can include the details of your work i.e. your name, the wood used, the size, the finish and any added pertinent details. In the case of the three items above, tell me the info and we will amend the on-line copy.



Elections for 2012

The election night came and went. There were no contested positions, so the former execs were acclaimed in the positions as noted below.

2011 Executive members

President: Eric Deckert
 Past President: Scott Beverley
 Treasurer, Turning Tips: Bob Fenn
 Secretary, Newsletter Editor: Bob Hewson
 Planning Committee Scribe, Webmaster: Eric Deckert

Members at large

Gary Miller - External Demonstrator Contact
John Calver - Demonstrator

Paul Newton

Library Committee:

Bruce Smith
Roy Phillips

Competition/Judging:

Bernie Hrytzak

Audio/Visual Committee:

Scott Beverley
Al Johnston

2011-2012 season scheduled meetings and other events. There may be changes as the year progresses. Your input is valued in the development of our program.

Date	Meeting or events	Shows/events/comments	
September 8, 2011 Note, this is the 2nd Thursday	Return from summer hiatus Monthly meeting	Carl Durance – Celtic knot techniques Challenge: a vase Jimmy Clews ticket sales	
October 6	Monthly meeting	Goblet demonstration by Mario Moran	
October 30	Seminar	Jimmy Clewes seminar. \$45, lunch included.	
November 3	Monthly meeting	Gilding demo, by Bob Hewson An ornament exchange to prepare for December's meeting	
December 1	Monthly meeting	Social evening – an ornament exchange, tool sale, bring goodies, invite significant others, bar. President's challenge: a turning themed on the UN's "International year of forests". Elections.	
January 5, 2012	Monthly meeting	Pendant by John Calver Challenge – a goblet	
February 2	Monthly meeting	A wig stand by Bob Fenn a charitable project concept	
March 1	Monthly meeting	3 short demos of "treen" items	
April 5	Monthly meeting	Burls 101, how to use and turn them by Doug Magrath "Treen" challenge (something useful)	
April 15 April 16	Seminar Workshop	Doug Fisher – general seminar and workshop	
May 3	Monthly meeting	German ring turning by Bernie Hrytzak	
Open	Hands-on symposium	Multi-media mini symposium – topics to be finalized (colorization, pyrography, texturing, airbrushing, piercing, and carving)	
June 7	Monthly meeting	David Bell turns a bullet pen President's challenge – to be finalized	
September	Monthly meeting	Carl Durance demonstrates kaleidoscopes	
	Program ideas and suggestions for guest turners. Member input is always welcomed by your committee	-Hand thread-chasing. -Guest turners or seminars. -Design? What makes a "good" turning into an "outstanding" turning? -Metal spinning -A safety night (discussion/panel) -Future challenge ideas: a pair of "something", a seed pod turning.	-Shear scraping -Turning a ring -Inlace -Basic drying of wet wood -Wine stoppers -Sharing of advanced techniques turning 201 -Make a home drying cabinet

Note: Meetings start at 7:30, doors open at 7:00. The open period from 7:00 and 7:30 is a great time to discuss problems or successes at the "Show and Tell" table. Raffle tickets, the library, and the Round Table critique are available between 7:00 and 7:30.



Items both wanted and for sale

Ads are free for members and run until you sell your item or withdraw your advert. To run an ad or to remove one, call or email Bob at 519-457-6555 or 66.bobhewson@rogers.com. Members can support other members by **buying: good deals and at good prices!**

Please note: The Guild provides a means of connecting buyer and sellers through these ads. It is up to the buyer to ensure the item offered is as stated and the two parties should agree between them as to warranty/guarantee.

We print on a non-date-specific schedule, generally every two months. Our newsletter can be found on the internet at <http://www.thamesvalleywoodturners.com/> for viewing in glorious **colour**.

For sale:

This is a list of tools belonging to Gord Woods, he is clearing out his workshop and most of his tools appear to be in good shape.

Radial Arm Saw, 10" Dewalt	\$175.00
Trademaster table saw 10" 24" rip	\$275.00
Trademaster 14" bandsaw	\$250.00
Trademaster 16" floor model drill press	\$130.00
4" steel vice	\$40.00
Mastercraft orbital sander	\$20.00
Craftsmen 10" compound miter saw with laser (new)	\$120.00
Kreg jig & clamp	\$50.00
B & D worm drive Skilsaw	\$35.00
Root-Zip	\$45.00
Mastercraft rotary tool kit	\$90.00
7 1/4" Skilsaw	\$15.00
B&D 1/4" router	\$15.00

Call: Gord Woods 519-376-2826 prices are estimates, offers will be considered.

For sale:

Beall Spindle tap 1" x 8tpi	\$12
Spindle tap 3/4 x 16tpi	\$12
B&D Orbital sander	\$25
10" table saw, Taiwanese, 3/4 HP induction motor. A real workhorse.	\$125

Call: Bob Hewson 519-457-6555 or email at 66.bobhewson@rogers.com

For Sale

General - Band Saw 15 1/2" Model 490 . Purchased in 1985.	\$1750
General - Table Saw model 350 -1 - M1. 3 hp. Purchased in 2000	\$1725
Union Graduate - 54 1/2" bed Wood Lathe 1 hp Purchased in 1987 and a Startrite mini dust collector	\$2250

The lathe is from the UK, T.S. Harrison & Sons Ltd Heckmondwike, Yorks.

Has 4 spindle speeds (loaded) but are manual.
Comes with these additional pieces

- 14 1/2" outboard plate
- 8 1/2" outboard plate
- 3 1/2" outboard plate
- 8 1/2" inboard plate
- 6 1/2" inboard plate
- 3 1/2" inboard plate
- 3 1/2" jaw chuck with 2 sets of jaws
- 7 1/2 1/2" tool rest
- 13 1/2 1/2" tool rest
- Bowl turning tool rest
- wrench for lathe
- 2 wrenches for jaw chuck
- 3 standard tail stock centers
- 1 tail stock chuck
- 1 tail stock live center
- 1 head stock center
- 1 reduction head stock center
- Inboard chuck set (blue container)
- Outboard chuck set (red box)

Delta Drill Press Purchased in 1987 \$300

Call: Dave Cardwell 519-364-2512 or email at dcardwell@wightman.ca

For Sale CA Glue and Log Sealer for Wood Turners

EM-02 VERY THIN, INSTANT CURE, Able to penetrate between parts, very thin viscosity, allows up to .002" gap fill capability

EM-40 MED-THIN, FAST CURE, General purpose, thin viscosity, allows up to .004" gap fill capability

EM-150 MEDIUM, MEDIUM CURE, Broad use adhesive, medium-thick viscosity, allows up to .006" gap fill capability

EM-600 MEDIUM THICK, MEDIUM CURE, Heavy duty adhesive, medium thick viscosity, allows up to .008" gap fill capability

EM-2000 THICK FILLER, SLOW CURE, Allows maximum time for positioning fixtures. Use to bond fibrous and porous materials. Flowable thick viscosity, allows up to .010" - .020" gap fill capability, excellent for filling large open cracks, gaps and holes. Use as a general manufacturing and repairing tough and uneven materials.

All are available in 2 1/4 oz. bottles bottle which includes 5 detachable long nozzles and an extra top with spout and cap.*

Price: \$15.00 (taxes included)

(*EM2000 does not include the 5 detachable long nozzles because it is too thick for the nozzles)

Additional long nozzles are priced at 5/\$0.25.

ACTIVATOR Instantly cures adhesives. Contains no CFC's. Mist Pump Sprayer

Price: \$10.00 (taxes included) 2 oz. bottle

DE-BONDER Required to un-glue items (example: fingers accidentally glued together)

Price: \$10.00 (taxes included) 2oz. bottle

This is the most superior CA Glue on the market. Manufactured by the company that invented CA Glue over 30 years ago

Log Sealer for Turners I have an inventory in 4 liter jugs of log end sealer on hand.

Price: \$25 which includes the sales tax.

Please call: prior to the club meeting. That way I can bring your order to the meeting and save on any shipping costs.

Call: Fred Rodger 519-858-2558 or email at frederick.rodger@sympatico.ca (Fred will bring it to the meeting for you)

Custom work:

I Have a vertical mill & metal lathe to make different turning tools (cutters, sharpening jigs, supports etc.) you name it, similar to the Hunter Tool for hollowing in two different sizes 1/4" & 3/8" round, also a square end cutter (all carbide cutters).

-If you want a curve put in rod it can be done too. You will have to make a drawing if you want a bend put in the rod. Price: \$50 straight, \$70 bent or curved.

-Aluminum handles to accept the tool is also available (you choose the size).

-See my sharpening jigs at the next guild meeting or call me.

-New item Custom vacuum chuck \$95

-For any custom work, please see me.

Call: Al Johnston at 519-679-8718

592 Mapledale Ave. London

For sale: I make and sell cutters for the Stewart system and or boring bars. They are made of hi-speed steel. Available in three sizes, prices are \$15, \$20, & \$25.

Call Mario Moran at 519-336-0550, or see him at the Guild meeting or mario.ada@sympatico.ca