



Thames Valley Woodturner

A publication of the Thames Valley Woodturners Guild

A chapter of the AAW

(Meetings held at 2155 Crumlin Side Road, London)



Volume 13.4 September/October 2011

Turning events, Wood shows, and competitions in our region and farther afield

October 30, Jimmy Clewes seminar. See Bob for sign-up. Fee \$45.

April 15 -16, Doug Fischer seminar on Sunday and workshop on **Monday**. To reserve either or both events see Bob

Contents

Treasury	P1
Visiting turners	P1
Internet sites of interest	P1
September meeting – Celtic knot	P2
Vase challenge (turned vase)	P4
October meeting – Goblet	P6
Show & Tell – September	P8
Show & Tell – October	P9
Calendar	P10
"For Sale" & "Wanted" ads	P11

For a Guild info/policy sheet or mentors list, call or email Bob Hewson at 66.bobhewson@rogers.com or refer to our web site at: <http://www.thamesvalleywoodturners.com/>

Treasury

We have ~\$4800 as of Oct 20th. This includes monies collected for the upcoming seminar.

Jimmy Clewes seminar

Remember, the Jimmy Clewes seminar is on October 30, 9:00 – 4:00



Formatting note

I made a font change a few issues ago, but now feel it was not as readable as the former font and thus have returned to Arial font for the newsletter. I hope you like the change, but if you prefer the former Khmer font, please let me know and if enough want it, I can easily change back.

Interesting new or updated sites

Google, Yahoo and MSN host newsgroups that cover virtually any topic you can imagine. Try typing your query as a question into the Google box and see the breadth of info you can find.

- Doug Fisher's site at <http://www.douglasfisher.com/index.html>
- A series of "You Tube" by Fox Chapel's resident photographer Scott Fryer on how to shoot product pictures. It is worth viewing if you have this interest <http://www.youtube.com/user/FoxChapelVideos#p/c/6938DD83EC66E6EB/8/AkidPEMULHE>
- Interested in the Longworth Chuck but don't want to do all the careful woodworking and slot cutting? Check out this source for a phenolic version <http://www.highlandwoodworking.com/longworth-chuck-16-phenolic.aspx>
- Want to carve a mallet? They are really hand around the shop. Here are how-to articles on a variety of sizes and weights. http://www.woodturningonline.com/Turning/Turning_projects.php?catid=51

Visiting turners

For the interest of members we continue to list future seminars and visiting turners scheduled at neighbouring Guilds as we learn of them.

These are the demonstrators that WGO, GHWG, TVWG and other area Guilds have either scheduled or are making arrangements for. The Guilds have generally said that members of other clubs are welcome to attend, space permitting. If you wish to attend make your wishes known as early as possible. Please let Gary Miller know for out-of-town sessions. Gary will verify that there is space and confirm the fees.

Carpooling may be arranged if there is sufficient interest, co-ordinate with Gary Miller. For sessions held in London see Bob Hewson to sign-up and or buy your ticket(s).

Guest turner	Date	Sponsor	Fee	Contact	Comments
Doug Fischer	Mid April , a Sunday seminar and a Monday workshop	TVWTG London	\$45 seminar and \$150 for workshop depending on number of participants	Gary Miller	Pending, a seminar and a hands-on workshop too



New Members

Welcome to new members Steve Coupar, Bob Mitchel and returning members Dave Norris and Otto Finkenzeller. Please make them welcome.



September meeting

The topic for our demo was Carl Durance showing us how to make celtic knots using veneer and demonstrated by the turning of a bracelet. Carl's presentation removed much of the mystery and showed us that the celtic knot is not so mysterious after all, rather an exercise in accuracy.

Techniques used and tips are covered below:

- Accuracy is the #1 requirement
- Angles used are between 11° and 13° for bracelets, $20^{\circ} \pm 2^{\circ}$ for stoppers, and $30^{\circ} - 35^{\circ}$ for pen blanks. The smaller the cross section the more pronounced the angle must be to make an acceptable celtic cross.
- The wood you insert must be as close as possible in thickness as the thickness of the blade used for your cut. Measure your kerf and your laminate thickness.
- The opposite sides of your billet must be parallel
- Use more glue rather than less. You don't want a glue starved lamination. For internal pieces of the lamination apply glue to both sides of the veneer.
- Glue laminate pieces with grain running the same direction, NOT crossed like plywood. This is to have expansion contraction working with the pieces, not against them
- Cutting veneers with a sharp knife is Carl's preference, he uses multiple cutting strokes and a steel rule cutting edge
- Sharpen Xacto blades with 600 grit abrasive (wet-or-dry is best) then when sharp give a couple of passes to the back of the blade to ensure a sharp point
- When doing glue-ups have enough clamps, you can never have too many clamps!
- When ready for use, sand a bevel to the edge matching that of your main cut i.e. For bracelets $11^{\circ} - 13^{\circ}$. This maximizes your useable wood.
- Cutting sequence is:
 - cut side 1, glue laminate, clamp and cure. Rotate 90° ,
 - cut side 2, glue laminate, clamp and cure. Rotate 90° ,
 - cut side 3, glue laminate, clamp and cure. Rotate 90° ,
 - cut side 4, glue laminate, clamp and cure overnight before turning Use a jig to apply clamping pressure to prevent slippage of the glue pieces
- A hose-clamp makes a good sizing tool for you custome/bracelet recipient..
- If you split a piece of veneer it can be glued together using Elmers white glue applied to the joint and pressed in place between wax paper.
- Use a scroll saw to remove center core of bracelet rather than turn it out. The salvaged piece can be made into a napkin ring
- Rubber bands around the spigot jaws act as a protector of the bracelet's finished interior
- Bracelets can be sized by using an adjustable hose clamp around the wrist, adjusting it to a comfortable fit.

Tools and materials you will need:

- | | |
|---|--|
| • Steel ruler | • Tape |
| • Sharpe knife (Xacto) | • Wax paper |
| • Saw capable of smooth flat cuts. Size and type dependant upon size of your wood (i.e. Table saw vs. Radial arm or chop saw) | • Clamping jigs |
| • Rubber bands | • Cutting jig or sled for your saw |
| • Long spigot jaws for scroll chuck | • Patience |
| • Clamps, clamps, and more clamps | • Veneer (Lee Valley or A&M woods) |
| • Glue (Carl has had success with most glues) | • Suitable wood – dry wood is preferred to green |

The process is illustrated and the key techniques are described in the following photos.



Cutting veneer with Xacto knife, several passes are best



Clamping during Glue-up of laminate



More clamps



You can't have too many clamps



Did I say lots of clamps?



Jig to clamp lamination pieces to prevent slippage



This happens if the lamination varies thickness from the saw cut



Final assembly



Into the gluing jig



Glue up showing final celtic knot pattern. Did I say lots of clamps?



Billet in lathe, corners knocked off to speed turning



Square off end



Carefully remove center waste and save for a future napkin ring



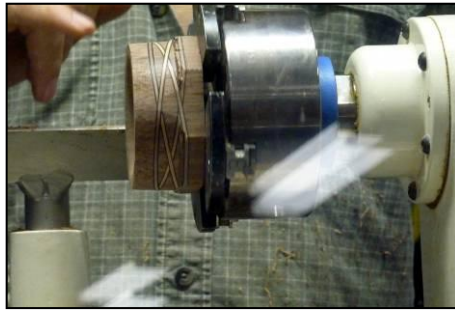
Do final shaping, sanding, and finishing



Use long spigot jaws to grip inside.



Add several elastic bands to jaws to prevent damage to finish



Turn exterior, finish and part off



September's vase challenge

The open winners were: Carl Durance 1st, John Calver 2nd, Gary Miller 3rd, Doug Magrath HM, Bernie Hrytzak HM.

Intermediate winner was Keith Harvey.

There were no novice entries.

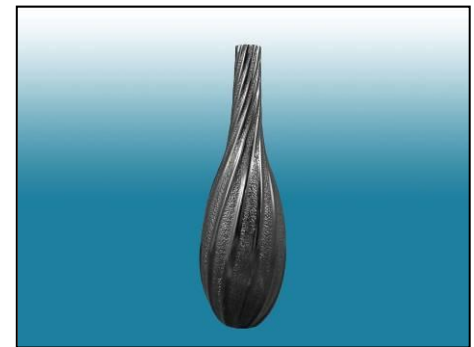
Only 40% of the members in attendance cast ballots during this challenge.



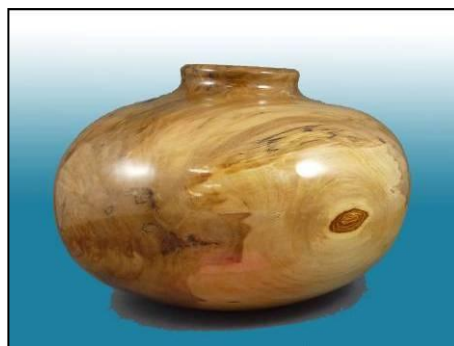
Turner: Carl Durance
Class: Open 1st
Segmented vase



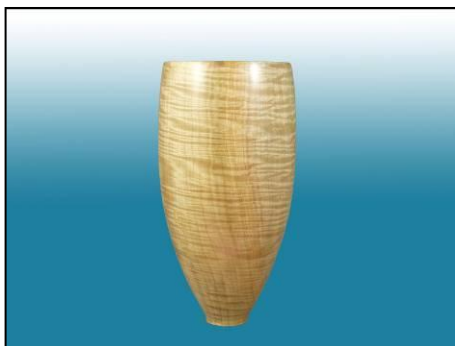
Turner: John Calver
Class: Open 2nd
Segmented vase



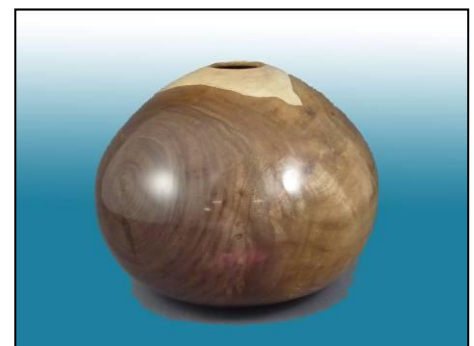
Turner: Gary Miller
Class: Open 3rd
Black spiral vase



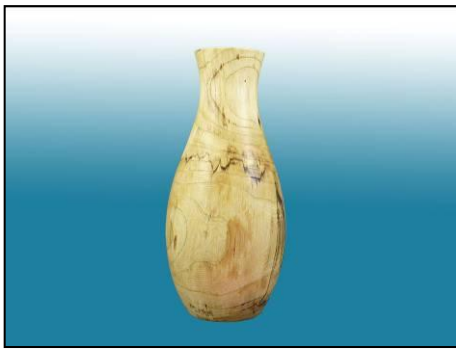
Turner: Bernie Hrytzak
Class: Open HM



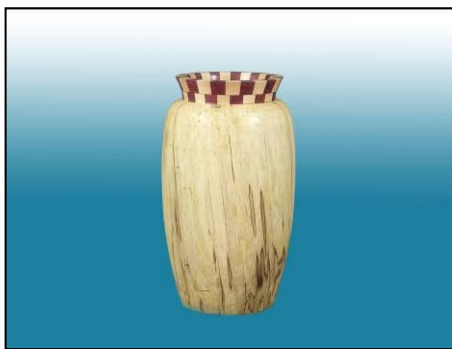
Turner: Doug Magrath
Class: Open HM
Maple vase



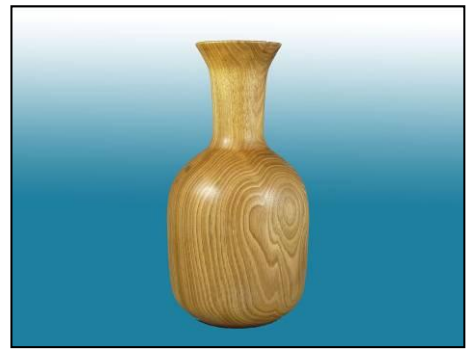
Turner: Bernie Hrytzak
Class: Open
Walnut vase



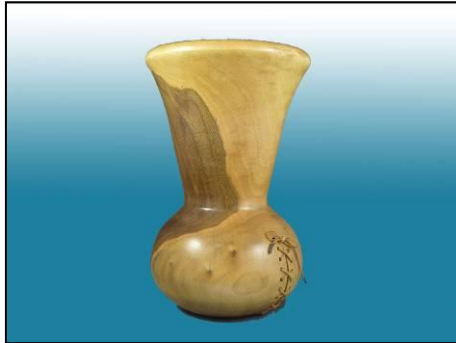
Class: Open
Turner: Geof Miller
Wood: spalted elm
Finish: oil



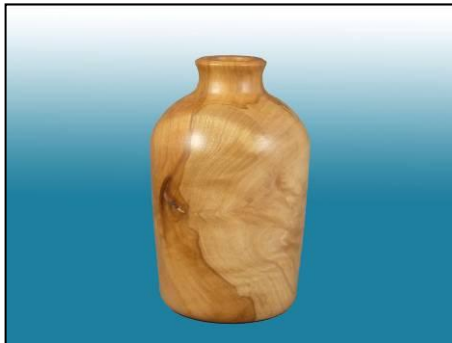
Turner: Mario Moran
Class: open
Spalted vase



Turner: Keith Harvey
Class: Intermediate 1st



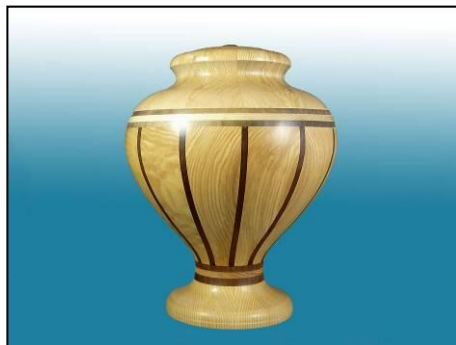
Turner: Keith Harvey
Class: intermediate
maple with interesting crack treatment



Turner: Keith Harvey
Class: Intermediate



Turner: Paul Newton
Wood: walnut
Finish: oil



Turner Gary Miller
Wood: burial urn, ash, walnut & ebony
Finish: ?



Turner: Bernie Hrytzak
Wood: apple
Finish: tung oil

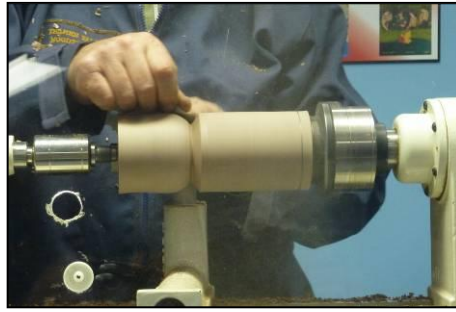


October meeting

Mario Moran demonstrated the fine art of Goblet turning. He likes to finish the interior with epoxy to make the goblet a wine drinking "glass" for his native South American wines.



Ready to go. He will turn a similar goblet with 2 captive rings



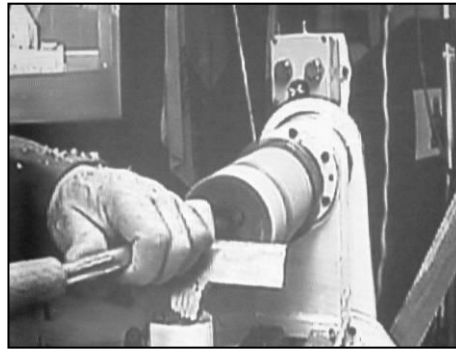
The starting operation is to shape the cup's external shape



Once completed, the cup is sanded and finish is applied



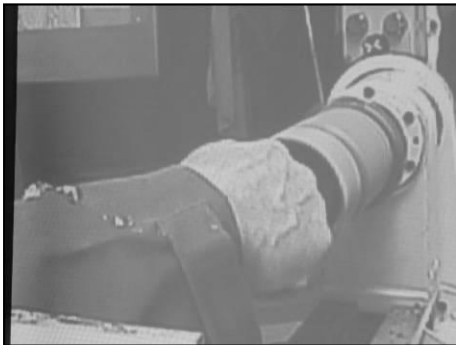
Next is to hollow the cup portion



Refining the shape. Leave a heavier bottom than you would on most vessels for strenght and stability. This goblet is to use!



A study in concentration!



Once the interior is turned and sanded to perfection the finish is applied. Mario usually uses an epoxy finish for food safe and to stand up to use – not dishwasher safe though...



The next phase is the stem and foot. A foam covered center/plug is used to hold and maintain alignment ddduring the turning of the stem and foot without damage to the cup rim.



Defining the stem foot dimensions and roughing the captive ring location.



The business end design of Mario's ring tool. The tool has a left and right undercut mode



Defining and undercutting the rings



The tool gives a good undercut profile



Ring free but captive



Both rings free and captive enabling refining of the stem and in preparation for sanding the rings



Ring interiors are sanded



Finish is applied to the rings



Followed by application to the stem and foot



Completed!



Show and tell – September



Turner: Carl Durance
Wood: segmented walnut, maple, & cherry
Finish: tung oil



Turner: Al Tamman
Wood: birch
Finish: shellac



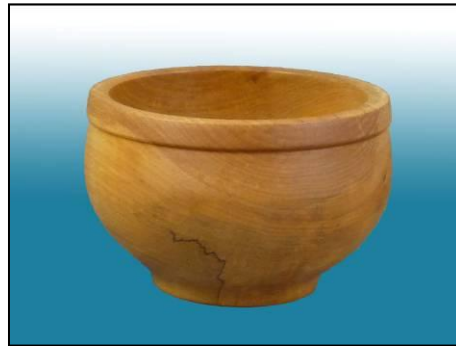
Turner: Carl Durance
Wood: layered walnut, maple inserts
Finish: tung oil



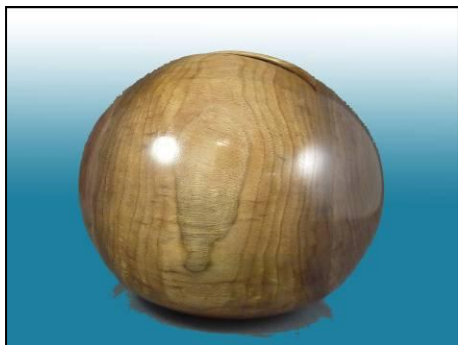
Turner: Paul Newton
Wood: cherry
Finish: oil



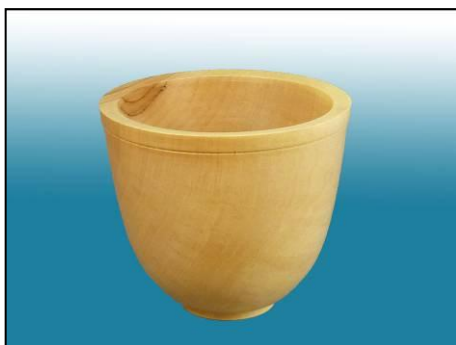
Turner: Carl Durance
Wood: bowl from a board, maple & walnut
Finish: tung oil



Turner: Paul Newton
Wood: spalted maple
Finish: oil and beeswax



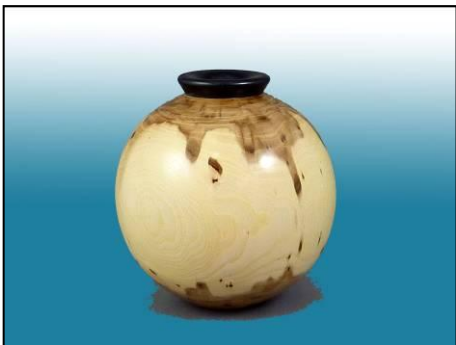
Turner: Bernie Hrytzak
Wood: walnut
Finish: tung oil



Turner: Paul Newton
Wood: maple
Finish: oil & beeswax



Turner: Carl Durance
Wood: bowl from a board, bin ha
Finish tung oil



Turner: Unknown

Please note: If you fill in the little card available on the show and tell table we can include the details for your work i.e. your name, the wood used, the size, the finish and any added pertinent details



Show and tell – October (Four Woodstock wood show winners head the list. Congratulations!)



Turner: Jackie Morningstar
1st in class, best in show at Woodstock
Walnut platter



Turner: Jackie Morningstar
1st in class at Woodstock



Turner: Jackie Morningstar
1st in class at Woodstock



Turner: Doreen Bowden
2nd in class at Woodstock



Turner: David Bell
Wood: Lilac
Finish: Natural polish finish, splits filled with Lumalite



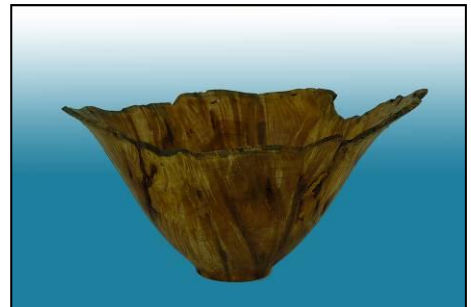
Turner: David Bell
Wood: silver maple burl
Finish: Minwax poly finish, cavities filled with blue Lumalite



Turner: John Calver
Wood: exotic. Pendant with copper insert



Turner: John Calver
Wood: Cocobolo with copper insert



Turner: Paul Jackson



Turner: Paul Jackson
Wood: Cherry bowl from a board
Finish: Oil
Size: 5" x 7"



Turner: Paul Jackson
Wood: Cherry/maple bowl from a board
Finish: Tung Oil
Size: 5" x 7"



Turner: Keith Harvey
Wood: Walnut/maple Celtic cross, bracelet and vessel made from core

Please note: If you fill in the little card available on the show and tell table we can include the details for your work i.e. your name, the wood used, the size, the finish and any added pertinent details. If there are any errors in attribution please let me know and the record will be corrected including the online newsletter copy.



2011-2012 season scheduled meetings and other events. This is our 1st look at the schedule; there may be changes as the year progresses. Your input is valued.

Date	Meeting or events	Shows/events/comments	
September 8, 2011 <i>Note, this is the 2nd Thursday</i>	Return from summer hiatus Monthly meeting	Carl Durance – Celtic knot techniques Challenge: a vase Jimmy Clews ticket sales	
October 6	Monthly meeting	Goblet demonstration by Mario Moran	
October 30	Seminar	Jimmy Clewes seminar. \$45, lunch included.	
November 3	Monthly meeting	Gilding demo, by Bob Hewson An ornament exchange, prepare for December's meeting	
December 8	Monthly meeting	Social evening – an ornament exchange, tool sale, bring goodies, invite significant others, bar (?). President's challenge: a turning themed on the "International year of forests". Elections.	
January 5, 2012	Monthly meeting	Pendant by John Calver Challenge – a goblet	
February 2	Monthly meeting	A wig stand by Bob Fenn a charitable project concept	
March 1	Monthly meeting	3 short demos of treen items	
April 5	Monthly meeting	Open at present Treen challenge	
April 15 April 16	Seminar Workshop	Doug Fisher – general seminar and workshop - pending	
May 3	Monthly meeting	Open at present	
Open	Seminar	Multi-media workshop – topics to be finalized (colorization, pyrography, texturing, airbrushing, piercing, and carving)	
June 7	Monthly meeting	Open at present	
	Program ideas and suggestions for guest turners. Member input is always welcomed by your committee	<ul style="list-style-type: none"> -Hand thread-chasing. -Guest turners or seminars. -Design? What makes a "good" turning into an "outstanding" turning? -Metal spinning -A safety night (discussion/panel) -Future challenge ideas: a pair of "something", a seed pod turning. -Treen 	<ul style="list-style-type: none"> -Shear scraping -Turning a ring -Inlace -Basic drying of wet wood -Wine stoppers -Sharing of advanced techniques turning 201 -Make a home drying cabinet

Note: Meetings start at 7:30, doors open at 7:00. The open period from 7:00 and 7:30 is a great time to discuss problems or successes at the "Show and Tell" table. Raffle tickets, the library, and the Round Table critique are available between 7:00 and 7:30.



Items both wanted and for sale

Ads are free for members and run until you sell your item or withdraw your advert. Members can support other members by **buying: good deals and good prices!**

Please note: The Guild provides a means of connecting buyer and sellers through these ads. It is up to the buyer to ensure the item offered is as stated and the two parties should agree between them as to warranty/guarantee.

To run an ad or to remove one, call or email Bob at 519-457-6555 or 66.bobhewson@rogers.com.

We print 6-7 issues per year on a non-date-specific schedule. Our newsletter can be found on the internet at <http://www.thamesvalleywoodturners.com/> for viewing in glorious **colour**.

For sale:

This is a list of tools belonging to Gord Woods, he is clearing out his workshop and most of his tools appear to be in good shape.

Radial Arm Saw, 10" Dewalt \$175.00

Trademaster table saw 10" 24" rip \$275.00

Trademaster 14" bandsaw \$250.00

Trademaster 16" floor model drillpress \$130.00

4" steel vice \$40.00

Mastercraft orbital sander \$20.00

Craftsmen 10" compound miter saw with laser (new) \$120.00

Kreg jig & clamp \$50.00

B & D worm drive Skilsaw \$35.00

Root-Zip \$45.00

Mastercraft rotary tool kit \$90.00

7 1/4" Skilsaw \$15.00

B&D 1/4" router \$15.00

Call: For the above items Gord Woods 519-376-2826 prices are estimates, offers will be considered.

Call: The following items call Doug Barfoot 519-377-7741 if no answer leave message.

Rockwell/Beaver 36" wood lathe on a bench, comes with chisels face plate and some attachments \$175.00

Canadian made general 6" jointer \$625.00

For Sale:

10x18 Steel City evs midi-lathe c/w bed extension \$410

MK 5 Shopsmith c/w lathe copier, extra 10" saw blades and turning chisels \$995

-12x36 3speed lathe c/w stand \$195

-12x36 vs reeves drive lathe c/w stand \$235

-8" Delta grinder \$75

-1x30 Delta belt grinder \$35

-L.V. 10" slow speed water wheel grinder c/motor \$210

-5 piece L.V. hss Henry Taylor turning chisels (new) 12" long \$90

-3/8" right angle vs/rev electric drill \$35

-6 piece Sorby high quality turning chisels (pre hss) 18" long \$90

Call: Bob Fenn at 519-455-7436

For Sale CA Glue and Log Sealer for Wood Turners

EM-02 VERY THIN, INSTANT CURE, Able to penetrate between parts, very thin viscosity, allows up to .002" gap fill capability

EM-40 MED-THIN, FAST CURE, General purpose, thin viscosity, allows up to .004" gap fill capability

EM-150 MEDIUM, MEDIUM CURE, Broad use adhesive, medium-thick viscosity, allows up to .006" gap fill capability

EM-600 MEDIUM THICK, MEDIUM CURE, Heavy duty adhesive, medium thick viscosity, allows up to .008" gap fill capability

EM-2000 THICK FILLER, SLOW CURE, Allows maximum time for positioning fixtures. Use to bond fibrous and porous materials. Flowable thick viscosity, allows up to .010" - .020" gap fill capability, excellent for filling large open cracks, gaps and holes. Use as a general manufacturing and repairing tough and uneven materials.

All are available in 2 1/4 oz. bottles bottle which includes 5 detachable long nozzles and an extra top with spout and cap.*

Price: \$15.00 (taxes included)

(*EM2000 does not include the 5 detachable long nozzles because it is too thick for the nozzles)

Additional long nozzles are priced at 5/\$0.25.

ACTIVATOR Instantly cures adhesives. Contains no CFC's. Mist Pump Sprayer

Price: \$10.00 (taxes included) 2 oz. bottle

DE-BONDER Required to un-glue items (example: fingers accidentally glued together)

Price: \$10.00 (taxes included) 2oz. bottle

This is the most superior CA Glue on the market. Manufactured by the company that invented CA Glue over 30 years ago

Log Sealer for Turners I have an inventory in 4 liter jugs of log end sealer on hand.

Price: \$25 which includes the sales tax.

Please call: prior to the club meeting. That way I can bring your order to the meeting and save on any shipping costs.

Call: Fred Rodger 519-858-2558 or email at frederick.rodger@sympatico.ca (Fred will bring it to the meeting for you)

Custom work:

I Have a vertical mill & metal lathe to make different turning tools (cutters, sharpening jigs, supports etc.) you name it, similar to the Hunter Tool for hollowing in two different sizes 1/4" & 3/8" round, also a square end cutter (all carbide cutters).

-If you want a curve put in rod it can be done too. You will have to make a drawing if you want a bend put in the rod. Price: \$50 straight, \$70 bent or curved.

-Aluminum handles to accept the tool is also available (you choose the size).

-See my sharpening jigs at the next guild meeting or call me.

-New item Custom vacuum chuck \$95

-For any custom work, please see me.

Call: Al Johnston at 519-679-8718

592 Mapledale Ave. London

For sale: I make and sell cutters for the Stewart system and or boring bars. They are made of hi-speed steel. Available in three sizes, prices are \$15, \$20, & \$25.

Call Mario Moran at 519-336-0550, or see him at the Guild meeting or mario.ada@sympatico.ca

PHILLMORE ENTERPRISES (LUMBER DIVISION)

CEDAR PINE WALNUT
RED OAK ASH BIRCH MAPLE
CHERRY
AND MANY OTHER SPECIES

GOOD QUALITY LUMBER AT REASONABLE PRICES

1092 SARNIA ROAD
LONDON, ONTARIO
N6H 5K1

ROY PHILLIPS
BUS: 471-3707