



# Thames Valley Woodturner

A publication of the Thames Valley Woodturners Guild  
A chapter of the AAW



Volume 11.5 September/October 2009

## Turning events, Wood shows, and competitions in our region and farther afield

**Feb 12 – 14** London woodshow with on woodcarving and wood turning competition open to all. Entry forms will be available soon, contact Bob Hewson at [66.bobhewson@rogers.com](mailto:66.bobhewson@rogers.com)

**April 25, 2010** Curt Theobald will be our guest turner for an all day seminar. See Bob to buy tickets\* or reserve a seat

**May 8, 2010** Bonnie Klein will be our guest turner for an all day seminar. See Bob to buy tickets\* or reserve a seat

**February 2010** London Woodshow and competition in conjunction with the London Woodcarvers Guild

### Contents

Additions to library	P1
Internet sites of interest	P1
Treasury	P2
September meeting – with Jack Wallace	P2
Advanced box turning	P3
Visiting turners	P4
Ongoing call for volunteers	P4
Draw for memento of Binh's visit	P5
October meeting with Al Johnston	P5
Updated mentor's list	P6
Woodturning competition at London Wood Show	P6
Al Stirt seminar	P7
Meeting etiquette	P9
Show & Tell	P10
Calendar	P10
For sale & wanted	P11

*\*Special rates for attendees at both demos*

For a Guild info/policy sheet, call or email Bob Hewson [66.bobhewson@rogers.com](mailto:66.bobhewson@rogers.com) or refer to our web site at: <http://www.thamesvalleywoodturners.com/>



## Additions to the library

New books:

DVDs: None

Catalogs: **Liberon** finishing products catalog – 2 reference copies are in the library. If you see a good DVD or book title that you feel would be an advantage to the guild, please let John Calver know.

A reminder: *Please return your DVDs or videos as soon as you have viewed them so other may rent them as well.*



## Interesting new or updated Internet sites

When checking out [newsgroups/forums](#) there are three main areas to browse, the messages, the photo albums and the files. [Messages](#) are the day to day member messages and threads which can also be searched from either the home page or the search box at the top of the message screen. [The photo albums](#) are like our monthly "Show & Tell" where members can post picture of their work. [Files](#) are usually "how to" files on a topic, project or technique prepared by the groups participants.

Google, Yahoo and MSN host newsgroups that cover virtually any topic you can imagine.

If reading this issue on the web simply click on the highlighted site and you will be taken directly to the site.

- For those interested in Segmented turning a new AAW chapter devoted to Segmented Turning, has been formed. They have officers, bylaws, and the web site at <http://www.segmentedwoodturners.org/>

- A new e-zine site <http://www.woodturningvideosplus.com/lathetalk.html> Liberon products are now available from Kingdom Restorations, 323 Trevathan St, Rocky mountain, NC, 27804 or call Floyd Rosini at 800-344-9257 or <http://www.kingdomrestorations.com/>

- Our Guild's new website is now <http://www.thamesvalleywoodturners.com/>

- Kurt Theobald's website <http://www.curttheobald.com/>

- Bonnie Klein's website <http://www.bonnieklein.com/>



## Please use the internet and our site as a resource.

Our website has our recent newsletters, a list of Preferred Suppliers, the Mentor list, and our Guild policy page plus a number of interesting links. We will keep the web site as our most current communication device (if you do not have internet access please let me know and printed copy can be made available to you *Ed*).

Our web site is <http://www.thamesvalleywoodturners.com/>



## New Members

Welcome to our newest member Jack McIntosh

We welcome guests who often become our newest members. If you know a turner that might be interested in our guild, please bring them along.

If you see one of our new members as well as anyone wearing a 'Visitor' tag please say "Hi" and make them welcome.



### Treasury and Dues

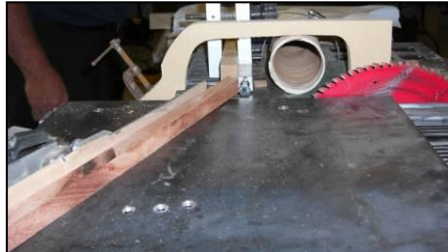
We have ~\$2000 available in the treasury after costs for the Stirt demo, and room rents are paid. (\$3739 cash on hand with outstanding accounts for the Stirt seminar, rent).



### September meeting

Our guest turner was Jack Wallace of the WGO who gave us a demonstration of basic segmentation techniques that were a step beyond simply using your table saw and its mitre slide.

Jack started out with a load of equipment spread on a table with a number of familiar and not so familiar tools and jigs. His first statement is you don't need a bunch of fancy high priced tools to do segmented turning, his table saw was a salvage from the side of the road, his sander from a garage sale, plastic buckets, drawer slides, plastic hose and pipe, protractor, parchment paper, glue (Pro-Bond), and of course a lathe and chisels.



*Thanks Jack for some excellent tips on how to begin segmenting turning. The techniques are not rocket science, but rather care to your measurements and angles. While the fanciest of equipment is not necessary the best saw blade you can afford and a precision protractor for ensuring correct angles and a fair degree of patience!*

*I'm sure as a tribute to your presentation we will see segmented vessels on future Guild "Show and Tell" tables*

*We have several DVD and or books in the library on Segmenting.*

*Ed*

**More detail from the September meeting**



As it was the beginning of our fall season Scott reviewed our history for visitors and also outlined several of the upcoming events including:

Demos by Ed Stirt, Bonnie Klein, and Kurt Theobald (a demo with Bruce Campbell has subsequently been cancelled as we were unable to obtain the meeting room for the required dates)

A planned draw in November for Binh Pho's art piece created during his demo in June

Plans are underway to create a turning competition at the London wood show in co-operation with the Wood Carvers Guild (*this will be a judged competition open to all with cash awards and ribbons, a step-up from the People's Choice we have conducted in the past. We will keep you posted as things develop*).



### Training course: Advanced box turning

Our advanced box turning project was lead Led by John Calver. A beautiful cherry box with a holly insert and a turned finial was the class project.



Total concentration and dedication. Look for finished boxes on the "Show and Tell" table at the November meeting.



### Visiting turners

For the interest of members we are listing future seminars and visiting turners at neighboring Guilds as we learn of them:

These are the demonstrators that WGO, GHWG, TVWG and other area Guilds have either scheduled or are arranging for. The Guilds have generally said that members of other clubs are welcome to attend space permitting, if you wish to attend make your wishes known as early as possible. Please let Gary Miller know for out-of-town sessions. He will verify that there is space and confirm the fees.

Carpooling may be arranged if there are sufficient numbers. For sessions held in London see Bob Hewson to sign-up and or buy your ticket(s).

As we know more we'll keep the membership apprised and will keep this as an ongoing feature in the newsletter.

Guest turner	Date	Sponsor	Fee	Contact	Comments
Bruce Campbell	October 22, 2009r	WGO	\$45 in advance \$55 at the door	Gary Miller	If sufficient interest perhaps a van-pool can be arranged
Curt Theobald	Sunday, April 25, 2010	TVWGTG London	\$40 or combined with Bonnie, both for \$65	Gary Miller	Confirmed.
Bonnie Klein	Saturday, May 8, 2010	TVWGTG London	\$40 or combined with Bonnie both for \$65	Gary Miller	Confirmed.

Cindy Drozda	Mar 26 2011	TVWGT London	\$40 est	Gary Miller	Tentative – Boxes and finials
Jimmy Clewes	Oct 16, 2011	TVWGT London	\$40 est	Gary Miller	Tentative - Everything
Andre Martell	Jan 2011	TVWGT London	\$40 est	Gary Miller	Tentative – Hook tool developer



### Log sealer is available once more from Fred

He would like to announce to everyone that he will continue to supply the log end sealer in 4 liter jugs.

He has an inventory in 4 liter jugs on hand. The cost for a 4 liter jug of log end sealer is \$25 which includes the sales tax.

For new members, the log end sealer is an emulsified solution of wax that is brushed onto the end of a log to slow the moisture loss and prevent the ends from cracking. The sealer is brushed on with an old paint brush and within minutes the wax begins to solidify and short after that the wax forms a solid seal on the end of the log. This solution can also be applied to a chunk of wood that you want to keep fresh in order to turn it at a later time. Also, you can apply it to a roughed out bowl in order to control and slow the drying process so that the piece does not check or crack.

Please call Fred prior to the club meeting. That way I can bring your order to the meeting and save on any shipping costs (see his advert in the "For Sale" section for phone number).



### An ongoing call for volunteers

Your guild is growing; we recently passed the 96 member mark, on our way to 100.

Our members' skill-sets are growing too. Not so our mentor list, it has been stagnant for several years; we could use some new mentors, volunteers who would like to share their skills with other members. To be a mentor you need only offer your skills to other members and be a member of the AAW too (this is required to validate our insurance coverage).

The same call for volunteers is being made for demonstrators. If you have a specialty or a particular turning skill, will you consider sharing it with the guild members? Please see any of the executive to offer your skills by way of a demo. Membership in the AAW is required for demonstrators, if you are not a member your membership will be paid by the Guild as an honourarium.

The month to month operation of the guild requires direction. Your current executive have been in place for a number of years, not necessarily by desire, but rather by need. All members of the executive will gladly step aside for those members wanting to serve.

We currently have an opening for a "training program" co-ordinator to co-ordinate the Training 100 series as well as a member of the program committee.



### A beautiful memento of Binh Pho's Demonstration

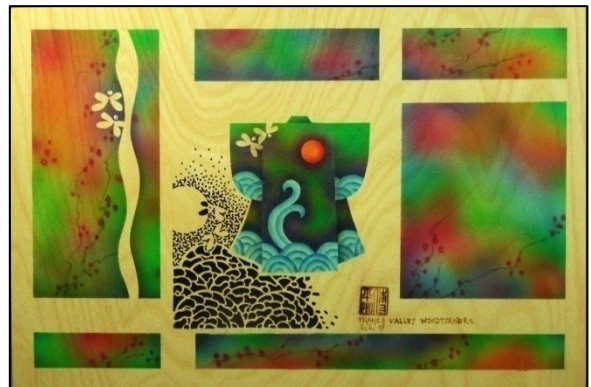
During Binh's seminar in June he created a flat art demonstration piece using the graphics, air brush and piercing techniques that he uses in his turned vessels. He has completed and signed and returned it to the Guild and suggested it be used to benefit the Guild. Your executive have opted for a draw.

Tickets are available from Bob Hewson for \$5 each or 4 for \$10.

Tickets sales are restricted to Guild members plus any outside participants at the June seminar.

We ask you to put your name and phone number on your draw ticket. You need not be in attendance during the draw to win.

**Last chance for tickets is at our November meeting!**



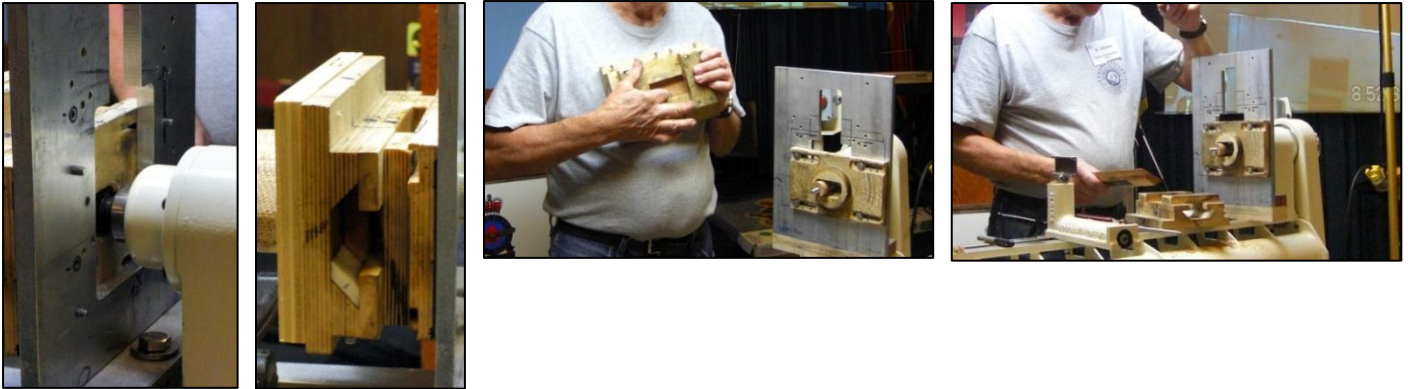
### October meeting

This month featured Al Johnston in a demonstration of do-it-yourself practicality through a demonstration of a home built (primarily wood) chuck for oval turning. Al stated that he always thought oval turning looked interesting and the mechanics of an oval turning chuck were a challenge. After researching the net and finding several do-it-yourself designs he made his first only to find it too complex, too many moving parts.

What do you do, you do some simplification and redesign and came up with his "markII" chuck which he demonstrated on the guild's One-Way.



The project he used for his demo was an oak box approx 5" long by 3" wide and 3" deep.



Some points of interest and caution: Since there is a largely invisible chunk of wood spinning CARE must be taken to save your knuckles.

There is a lot of friction involved in the turning with this chuck, wax is used as an effective lubricant for wood on wood surfaces  
The off centre nature of oval turning applied a lot of movement to the lathe requiring either small turning (les off-balance weight, or added weight to stabilize the lathe.



*I'm sure we will see new turnings from Al's new chuck in future meetings as well as improved versions of his chuck.*

*Ed*



### **Have you had a skills enhancing learning session with a club Mentor?**

To all of our membership and in particular new members may we remind you that our mentors have skills they are willing to share, it is up to you to tie-up with one and make arrangements to move your skill set up a notch.

The Guild is also looking for members who will volunteer their skills to teach and enhance the skills of other members. If you would like to add your name to the mentoring list and wear the "wise owl" on your name-tag please call one of the Guild executive have your name included. You need not be a totally rounded turner to be a mentor, a particular skill you are able to teach is great too (mentors are not prohibited from getting help in a particular area as well), but you do need to be a member of the AAW to be covered by the AAW's insurance thus protecting you, your student and your Guild.





Look for the wise owl on member's nametags to identify mentor volunteers. If you need help or advice please feel free to contact any of the members listed below. They have kindly offered their skills through our mentor program.

If you wish to offer your skills through the program please contact Bob Hewson or any of the executive and your name will be added to the list.

Mentor	Topic	Address	Phone
Bob Fenn	Any topic	49 Susan Ave., London	519-455-7436
Bob Hewson	Pen & kit turning	22 – 99 Edgevalley Rd, London	519-457-6555
John Calver	Any topic	59 Glenburnie Cr., London	519-455-6998
Mario Moran	Any topic	316 Indian Rd. S., Sarnia	519-336-0550
Tom Pinches	Any topic	RR #2, Belmont	519-644-0434
Doreen Bowden	Any topic	8476 Century Dr., Mount Brydges	519-264-2361

Rev10/4/09



### Follow-up for the woodturning competition at the London Wood Show

At our September meeting this subject was brought up with follow-ups as they develop.

The plan to join with the Wood Carvers Guild has been several years in the making and really stems from our early days at the London Wood Show where we had a judged competition open to all turners. After a couple of years the added expense of and difficulty in obtaining qualified judges we embarked on the "Peoples Choice" route of judging entries. This has worked for us for several years but there was always an groundswell of the members who felt their turnings should be judged by competent judges with a knowledge of turning and of the creative process.

This awakened the interest in approaching the Wood Carvers Guild for a joint judged competition giving more exposure and recognition to our work.

We have succeeded in a marriage and for the 1<sup>st</sup> year the following details are listed.

- 1) The venue is the London Wood Show on February 12 – 14
- 2) We will be showing and the judging will occur in the area where the wood carvings have been displayed, there will be a separate section for competing turnings.
- 3) There will be two classes of turners, Novice and Open. There will be two turning categories, faceplate and spindle.
- 4) There will be a cash prize panel specifically for turners (sponsored by your Guild)
- 5) Ribbons and rosettes will be provided
- 6) There is an entry fee, \$8 for 1<sup>st</sup> entry and \$4 each additional entry (no limit)
- 7) Turnings must have been completed in the 12 months prior to the competition and must be made primarily of wood
- 8) Judging will be carried out by a panel of three judges, two of which will be recognized turners
- 9) Competition is open to all woodturners (we hope to see a good turnout of TVWTGuild members) including other guilds and non-guild turners
- 10) Turnings participate in "Best of Show". This category will include turnings and "non-bird/animals carvings" who have a separate "Best of show".
- 11) Turnings must be presented for registration by noon on the Saturday.
- 12) Turnings will not be available for pickup until Sunday at 5:00PM If you can not be there for pickup make arrangements with a guild member to pick up your turning.

While we hope all members will enter the competition, we will also require turnings (old or new) to display at our Guild booth.

If the competition goes as well as we expect we can perhaps expand next year with perhaps an intermediate class and add an "artistic" category. Input will be sought from the membership as we progress after this season's show.



### A day with Al Stirt

What a privilege it was to spend the day watching and learning from Al Stirt. Al has been acknowledged as one of America's Woodturning Masters by many prominent curators and writers, the most recent of which was Jim Christiansen in his book "MASTERS – Major Works by Leading Artists". Woodchucker's had sent a dozen of these books to offer for sale at Al's demo with instructions to send any unsold ones along with Al to his next venue. There were none left and I could have sold many more. If you didn't take advantage of this opportunity you missed a treat and this may well have been Al's last tour in this area.



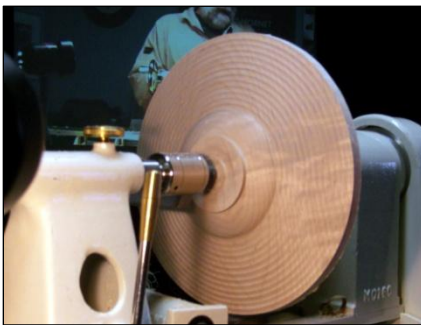
Al started the day showing us how he “balances the grain” when preparing to turn a lump of wood. “Pretty basic” you say? Maybe, but so many novices (and even more experienced turners) are only concerned about form when setting up to turn a lump of wood.



Often, especially if you’re inclined to turn pre-prepared, dry bowl blanks, it’s a matter of truing it up, shaping and hollowing it and finishing it. Al used our video overhead to show us the visual effect of “balancing the grain”. Two identical bowls, one turned without concern about balancing and the other using his technique. The aesthetic differences were quite evident. Al used a drive spur that he built himself that is quite unique and makes it very easy to shift the bowl blank until the grain is visually “centered” (see photo’s #1 to #3). He also removed the point in the live centre, utilizing only the ring. He rough turned 2 such blanks, one in Cherry and one in Ash, both with strong grain characteristics showing us where compromises must be made and which take priority. He then took a previously dried rough turned Cherry bowl blank and finish-turned it. His technique was not traditional, but extremely effective. He spent time showing us how he uses the upper (left) wing of his bowl gouge to take his finishing cuts. He then set up a vacuum chuck, reversed the bowl and finished the base.

For the second part of his seminar, Al demonstrated how he prepares and turns one of his signature platters. It has a wide rim that is embellished with overlapping chevrons. Using a piece of Soft Maple, he mounted it between centres, prepared a chuck tendon and turned the bottom to an ogee-like shape with a small-diameter bowl outline in the centre (Fig 2). He then demonstrated a couple of different ways of embellishing the bottom. First he marked out a series of lines with a pencil about 3/8” apart (Fig 3). He then turned shallow coves from the base to the edge of the rim directly off the gouge, a very attractive effect.

He then “erased” the coves (turned them off) and re-marked the exterior with fresh lines and, using a detail gouge, created a series of beads from the bottom to the rim in one continuous process, rolling the gouge over each bead and cutting each furrow with the tip (Fig 4). What tool control!!! A little light sanding was all that was required to bring it to a finished state.



Al then reversed the platter and turned the top. He followed the slight curve of the bottom of the rim to where the bowl would be hollowed and then applied 2 coats of black gesso to the rim and let it dry while we took a short break for lunch (Fig 5). When we returned he hollowed the bowl, cutting through the edge of the gesso leaving a very clean bowl edge (Fig 5). His tool technique was superb. He used the upper (left) wing method previously discussed to do his final cuts. Only light sanding was required to make it finish-ready. He then cut a narrow v-groove on the rim, about 3/16” from the bowl edge, exposing the light Maple colour through the black gesso, creating a visual break for the rim embellishment to follow.

Before embellishing the rim, Al set the platter on a plywood index wheel and marked off a series of points along the rim with a yellow “water colour” pencil (shows up on the black gesso). He did not use these marks for “absolute” positioning of his design but more as a guide. Al uses a heavy Mylar material for cutting out templates for his designs (he gets it from a quilting store). He made an acute



angle template to draw the randomly placed overlapping chevrons on the rim, again using the yellow coloured water colour pencil He made no attempt to do the whole rim but showed us how he used his Ryobi reciprocating carver with a Flex-cut "V" tool to incise the narrow lines of the chevrons, which exposed the light Maple beneath. His tool control was again evident, as the lines were beautifully consistent and didn't wander (Fig 7).

He then set up a vacuum chuck, reversed the platter, turned off the tendon and finished the base (Fig 6).

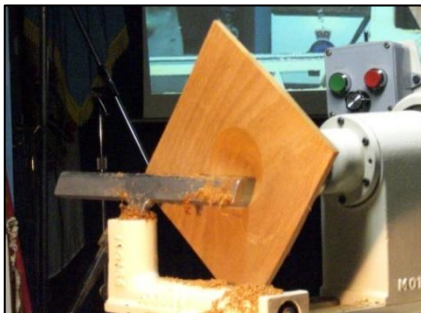
Al uses a matte spray lacquer to put a finish over the gesso to protect it. Artist's fixative works equally well.

Al's final demonstration was turning and embellishing a square platter/bowl. He used Honduras Mahogany (sometimes Cherry) for this project because it is not only a beautiful colour but also chemically reacts with the protein in the Milk Paint that he uses in the embellishment process. When exposed, the wood that was covered with the Milk Paint becomes a rich, almost antique-looking, colour.

First, Al mounted the square blank between centres, trued the bottom and made a tendon to mount the bowl on a chuck. He then turned the bottom to its final flared shape. Turning a square blank can be tricky and he showed us how he draws the bevel of the gouge back to the tips of the square and while holding that position, adjusts the gouge a little so it will take a light cut and then moves it forward from the outside tips. He repeats this as often as necessary – until the wings are smooth and consistent to where they merge with the bowl component (Fig 7).

He then marked circular lines from the very tips of the square inward to the base starting at about 1 1/2" apart, reducing progressively to about 1/2" at the base. He then turned shallow coves between the lines from the very outside to the base using a detail gouge. Then he incised mini-coves (about 1/16" wide) inside each of the larger coves to create an interesting surface texture. Again, his tool technique was so perfect that only light sanding was necessary to finish.

He then reversed the blank, mounting it in a scroll chuck and turned the top. Although it appeared quite flat, the "wings" are actually a slight "S" curve from the tips to where the bowl is located. He turned the smallish bowl using the previously explained top-gouge-wing technique.



He then incised 1/16" v-grooves from the outside edge of the bowl portion right down to the bottom (Fig 9). A nice design element. He then cut a 1/8" demarcation v-groove on the rim, about 3/16" from the bowl edge. He marked circular lines starting at the extreme wing tips down to the v-groove, about 1/4" apart. He then marked radial lines from the outside edge to the v-groove using the tool rest, while rotating the work piece at 3/8" intervals. Using all these lines as guide marks, he used each corner of the square to demonstrate 4 different ways of embellishing the rim (Fig 10).

On the first corner, he used a high speed electric dental (Dremel-like) tool into which he inserted a 3-point carbide-tipped cutter that produces 3 parallel cut-lines. He used the previously mentioned guide lines to make random short cuts along the radial lines, between the circular lines. He then randomly made short cuts following the circular lines, creating a basket weave pattern. No attempt was made to try to make the pattern perfect. He pointed out that he was concentrating on the surfaces left between the cuts more so than the cuts themselves. After cutting the pattern he smoothed it lightly with 3M "medium" abrasive pads.

Using the same electric rotary tool, he switched to a similar cutter that produced a narrow cove-like groove. He used pretty much the same technique as that described to create a different pattern in a second corner. Again, he smoothed using the 3M pad.

On the 3<sup>rd</sup> corner, he used the same cutter (as the second corner) to cut radial lines from the extreme outside to the v-groove. These are quite randomly placed and some actually overlap and no "flat" surface remains. Again, smoothing with the 3M pad.

On the 4<sup>th</sup> corner he used a cylindrical rotary cutter with a round tip to cut rows of somewhat random "S" shapes. Each row overlapped the preceding one by about 50% creating a wave-like pattern and he smoothed it with the pad.

After cutting the 4 patterns, he painted the rim and bowl with black Milk Paint that he had mixed earlier in the morning (Figs 11 & 12). We had a short coffee break while the paint dried. Al used a hair dryer to accelerate the process. After it was dry, Al rubbed the textured surfaces with medium and fine 3M pads to expose the rich colour of the wood underneath. Although he did not apply any finish, Al uses matte lacquer to seal the surfaces.



That pretty well wrapped up the demo but Al



entertained many questions from the attendees (which he encouraged throughout the day). There was a great deal of interaction with Al all day long, demonstrating the level of interest by the audience. All-in-all it was an interesting and educational day and much appreciated by those in attendance. I encourage you to take a look at Al's web site and, if possible, to either buy or borrow Jim Christiansen's book (available at Woodchucker's) to inspire and motivate you.

Gary Miller

Thanks Gary for the photos and article, hope I captioned these correctly

Ed



### Meeting etiquette

Please give the presenter the courtesy of quiet during his presentation. Noise and conversations are very distracting to the presenter as well as the other members.



### Show and tell

We have decided to make a change to the "Show and Tell" feature at our meetings. We are reverting to our previous format. "Show and Tell" is meant to be a showcase and assistance to all members. Bring in your work, work in progress, work you want to brag a little about, or a project that you need some help with. New ideas and techniques are always welcome at "Show and tell". As time permits you can present your work to the group (or not) for comments and questions.

For the November meeting please bring a Christmas themed turning, not necessary a tree ornament. This will be in lieu of our Christmas ornament challenge and may encourage us to try a new idea or two for Christmas.

Bring as many pieces as you wish.



### 2009-2010 season scheduled meetings and other events.

Date	Meeting or events	Shows/events/comments
September 10	Fall season begins	Segmented turning by Jack Wallace of the WGO. "How to" info!
September 27	Advance Box turning 203 (9:00 – 4:00)	To sign-up, see Scott
October 1	Monthly meeting	Al Johnston will demonstrate his Elliptical Chuck
October 3	Visiting turner - 9:00 – 4:00	Al Stirt - Full-Day Demonstration, tickets \$40.
November 5	Monthly meeting	Brian McNaughton will demonstrate "the Skew, friend or foe"
December 3	Monthly meeting	John Calver will demonstrate Polyester casting for use in turning beautiful bottle stoppers. Show and tell, please bring in a turning to show we would love to see what you are doing these days (evenings). Christmas themed "Show and Tell"
January 7	Monthly meeting	Bob Hewson will demonstrate the Beall pen wizard
February 4	Monthly meeting	Anticipate Fred Roger as demonstrator, topic not finalized
February 12 – 14	London Wood Show with a joint Wood Carvers and TVWTG guilds competition	There is ~\$500 in prize money contributed by your Guild. Judging will be by a 3 judge panel with Open and Novice categories and faceplate and spindle turning classes.
March 4	Monthly meeting	Bernie Hyrtzak will demonstrate stave construction turning
April 1	Monthly meeting	Turning a bracelet for your significant other. We are looking for demonstrators of different techniques
April 19	Turning 101	A repeat program aimed at new recruits from the woodshow as well as current members.
April 25	Visiting turner – <b>Confirmed</b>	Curt Theobald – full day demonstration. Curt's field is segmentation. No Sales in tickets as of this time.
May 6	Monthly meeting	Gary Miller will demonstrate how to turn a Cabriole leg
May 8	Visiting turner – <b>Confirmed</b>	Bonnie Klein – full day demonstration.
June 3	Monthly meeting	Duelling rose engines brought to you by John and Gary.





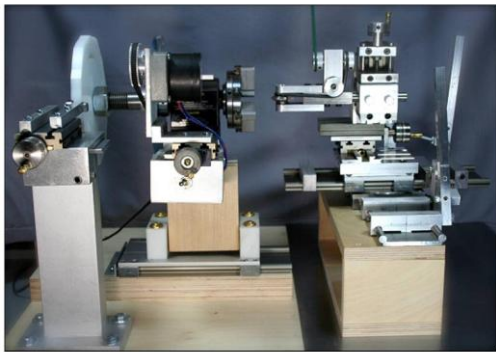
**Custom work:**

I Have a vertical mill & metal lathe to make different turning tools (cutters, sharpening jigs, supports etc.) you name it, similar to the Hunter Tool for hollowing in two different sizes 1/4" & 3/8" round, also a square end cutter (all carbide cutters ).  
-If you want a curve put in rod it can be done too. You will have to make a drawing if you want a bend put in the rod.  
Price: \$50 straight, \$70 bent or curved.  
-Aluminum handles to accept the tool is also available (you choose the size).  
-See my sharpening jigs at the next guild meeting or call.  
-New Custom vacuum chuck \$95  
-Any custom work, please see me.  
Call: Al Johnston at 519-679-8718  
592 Mapledale Ave. London

**For sale:** I make and sell cutters for the Stewart system and or boring bars. They are made of hi-speed steel. Available in three sizes, prices are \$15, \$20, & \$25.

Call Mario Moran at 519-336-0550, or see him at the Guild meeting or [mario.ada@sympatico.ca](mailto:mario.ada@sympatico.ca)

CANADIAN ROSENGINE INNOVATIONS



Let us build you an extremely accurate and dependable rose engine:

8" radius turning capacity.

Headstock, X and Y axis movements slide on Delrin linear slides

Micro adjustment possible using Taig cross slides on rosette tower, timed belt and pulley adjustment and X-Y axis movements.

Headstock powered by a 1rpm geared motor using geared pulleys and belt.

Universal cutting frame powered by a Sherline motor and speed controller

Cutter frame uses 60 degree carbide cutters.

Magnetic hold down for cutting frame tower allows for infinite positioning of cutter frame

Headstock has pumping and rocking capabilities.

Work can be phased by an indexing system which allows 1 degree indexing

Contact John Calver at (519) 455-6998 or [jrcalver@rogers.com](mailto:jrcalver@rogers.com) for complete details, more pictures and pricing.

**For Sale CA Glue and Log Sealer for Wood Turners**

**EM-02** VERY THIN, INSTANT CURE, Able to penetrate between parts, very thin viscosity, allows up to .002" gap fill capability

**EM-40** MED-THIN, FAST CURE, General purpose, thin viscosity, allows up to .004" gap fill capability

**EM-150** MEDIUM, MEDIUM CURE, Broad use adhesive, medium-thick viscosity, allows up to .006" gap fill capability

**EM-600** MEDIUM THICK, MEDIUM CURE, Heavy duty adhesive, medium thick viscosity, allows up to .008" gap fill capability

**EM-2000** THICK FILLER, SLOW CURE, Allows maximum time for positioning fixtures. Use to bond fibrous and porous materials. Flowable thick viscosity, allows up to .010" - .020" gap fill capability, excellent for filling large open cracks, gaps and holes. Used as a general manufacturing and repairing tough and uneven materials.

All are available in 2 1/4 oz. bottles bottle which includes 5 detachable long nozzles and an extra top with spout and cap.\*

**Price:** \$15.00 (taxes included)

(EM2000 does not include the 5 detachable long nozzles because it is too thick for the nozzles)

Additional long nozzles are priced at 5/\$0.25.

**ACTIVATOR** Instantly cures adhesives. Contains no CFC's. Mist Pump Sprayer

**Price:** \$10.00 (taxes included) 2 oz. bottle

**DE-BONDER** Required to un-glue items (example: fingers accidentally glued together)

**Price:** \$10.00 (taxes included) 2oz. bottle

This is the most superior CA Glue on the market. Manufactured by the company that invented CA Glue over 30 years ago

**LOG SEALER FOR TURNERS** I have an inventory in 4 liter jugs of log end sealer on hand.

**Price:** \$25 which includes the sales tax.

Please call: prior to the club meeting. That way I can bring your order to the meeting and save on any shipping costs.

Call: Fred Rodger 519-858-2558 or email at [frederick.rodger@sympatico.ca](mailto:frederick.rodger@sympatico.ca) (Fred will bring it to the

