

Thames Valley Woodturner

A publication of the Thames Valley Woodturners Guild (since 1997)

(Meetings held at 2155 Crumlin Side Road, London)



Contents

Treasury	P1
Internet sites of interest	P1
May meeting – Dave Hudgel – propeller bowls	P1
May show and tell	P3
June meeting – Gary Miller – texturing techniques	P5
June show and tell	P7
1 st Guild Turning Competition	P8
Tops for Tots follow on challenge	P8
Turning 101 (spindle turning)	P9
New Start time of 7:00	P9
Calendar	P10
"For Sale & Wanted" ads	P11

Any member wishing to contribute content to the newsletter in the form of articles, tips, or want-ads
PLEASE contact

Bob Hewson (Photos, articles, photo-articles).

For a Guild info/policy sheet or mentors list, call or email

Bob Hewson at 66.bobhewson@gmail.com or refer to our
web site at: <http://www.thamesvalleywoodturners.com/>

Volume 22.3 May-June, 2019.

Our Treasury

Our treasure as of our June executive meeting was \$3313.



Interesting internet sites for members

Members can submit sites of topical interest for this feature by emailing me (66.bobhewson@gmail.com).

To find virtually any topic you can imagine, try typing your query as a literal question into Google's search box and see the breadth of information you can find.

The **colored highlights** are **hotlinks**, click them and they go directly to the website, if that doesn't work copy the link into your browser. You can make your searches for **images or videos** only by choosing from the choices sub menu below the search box.

- Here is a video on who owns who in the tool business. A lot of surprises

<https://www.youtube.com/watch?v=yGRVDRZbPkQ&feature=youtu.be>

- Here is an article on how to make a tool rest for your mini lathe. No reason it could not be scaled up for a larger lathe https://www.instructables.com/id/Woodworking-Toolrest-for-the-Mini-Lathe-From-Scrap/?utm_source=newsletter&utm_medium=email



May meeting

A propeller bowl by Dave Hudgel. Propeller bowls can have a variety of types, but most involve initially off-balance turnings and turning a lot of "air". So be very careful in attempting these techniques.



Example of propeller bowl



Example of propeller bowl



Example of propeller bowl



Example of propeller bowl with tenon on place



Dave points out features of his heavy "heavy duty" chisel



His preferred tool rest with a "lip" to enables maximum tool control. Note too, the use of the chuck screw and plywood cushioning disk.



Use of the finger in the tool rest curve for maximum tool control. Particularly important when turning this type of project



The blank is fastened using the "screw chuck" in the chuck



Use the tail stock to aid in holding the out of balance wood. Note too the extension of the tailstock center to aid in giving Dave more tool access room



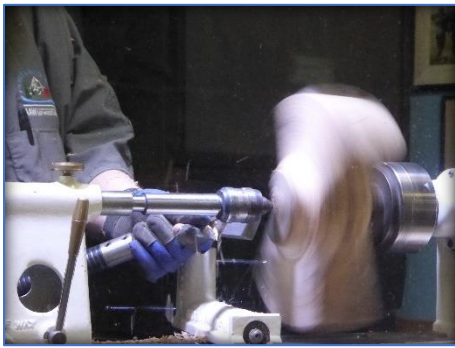
Lots of air to be turned. This results also in off balance turning. Use EXTREME care!



Uneven wood removal because of off-balance wood.



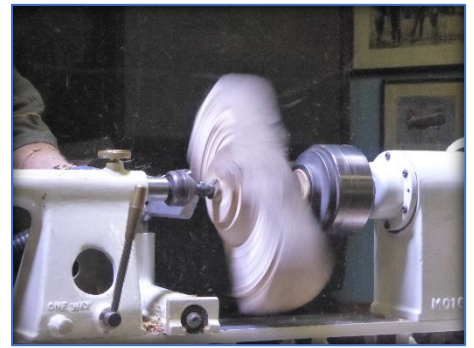
Dave has the latest in safety shields with added protection at the bottom of the shield to protect the neck area. While it costs a few bucks extra, how much is your life worth!



Take care in cutting air. This is where heavy-weight chisels proves it's worth



Slowly shape the bottom of the bowl and flatten the "wings"



Working on the tenon.



The bigger picture



*Things to watch out for: >>>
-Off balance turnings need to be fastened down tightly.*

- Your lathe may not handle too much off center weight and may get your lathe moving around your shop.
- Always use a face Shield!!! -
- Know where your chisel is relative to the spinning wood, turning air can be dangerous.
- If turning a winged or propeller bowl start small and err on the side of caution. As you saw, out 1224 lathe was doing a lot of vibrating.



May Show and Tell



Gary Miller, walnut box with a fluted and threaded lid, boxwood insert in base. Finished with Shellowax



John Calver, tiger maple with oil finish



Kyle Desjardine, maple and purple heart with a friction polish finish



Kyle Desjardine, maple and African blackwood with a friction polish finish



Joe Wallace. Mahogany finished with Shellowax



Large natural edge bowl turner unidentified



Greg Lisson. Spalted silver maple and a friction polish finish



Greg Lisson. Spalted silver maple and a friction polish finish



Greg Lisson. Spalted silver maple and a friction polish finish



Sample of thermal ash. A special heat treatment of wood that hardens and adds dark coloration. Paul Jackson is evaluating this material in his restoration business.

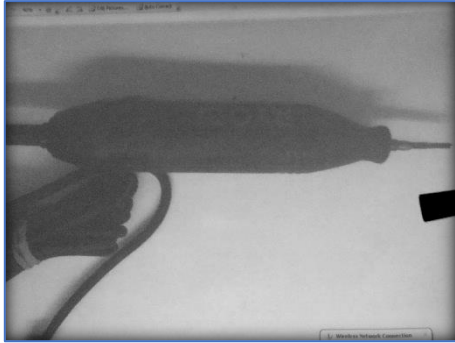


June meeting

Gary Miller was our presenter in June and his topic was various methods of texturing or embellishments of your turning. This presentation was more of a smorgasbord of techniques that you can try than in depth treatment of each.

The photos that follow are based on a single phot per technique as well as a source of the tool/material.

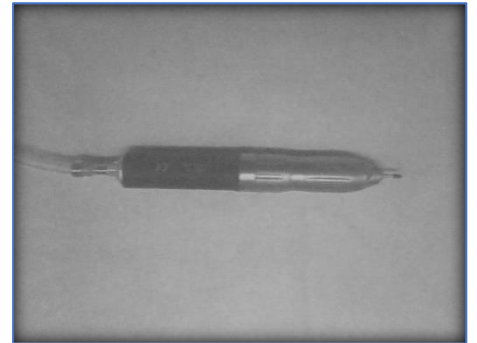
Our **November meeting challenge** is a textured/embellished box based on earlier demos in April meetings by John Calver and this month's presentation by Gary (no limits as to size, material, or texturing/embellishment(s) for the challenge).



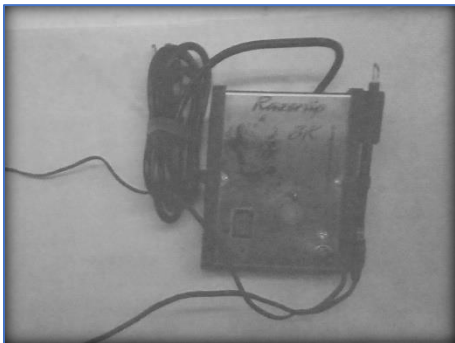
Ryobi power chisel (Ebay for \$150)



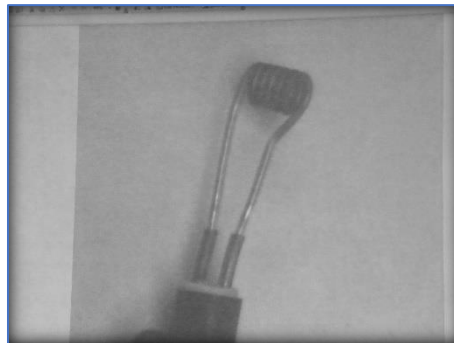
A Dremel tool takes bits of 3/32" and 1/8" shank. (\$50 - \$125 at Home depot). Great assortment of cutter tips available for different textures. Also heavy duty Dremel and Foredom rotary tools \$400+ are available)



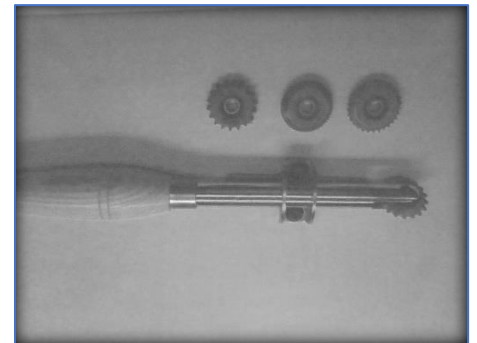
Air turbine cutter. takes small dental bits and spins at high speed (400,000rpm)- See <https://sculptingstudio.com/> price ~\$300US)



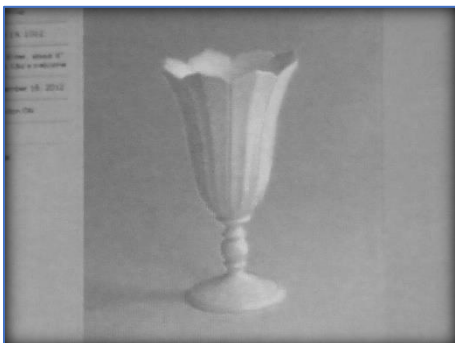
"Razor tip" wood burner. (<https://www.razertip.com/> or Lee Valley tools \$160 up)



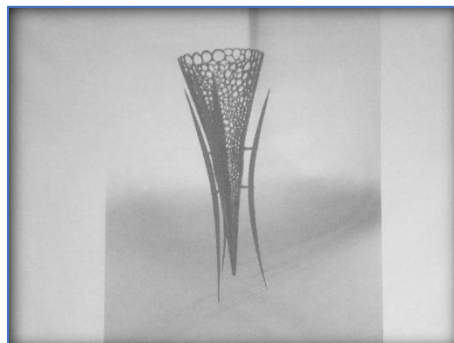
A specialized "Razor Tip" burning tip (Lee Valley Tools - \$30 each)



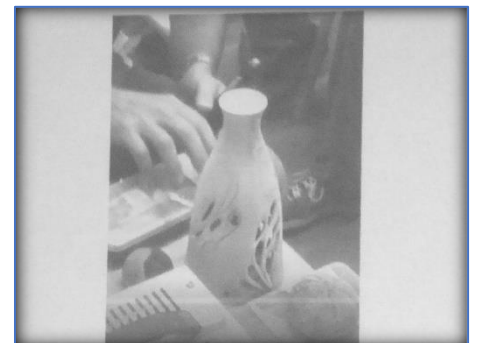
Sorby texturing tool (Busy Bee tools \$169) see also chatter tool for texturing on YouTube as another option



Example of carving



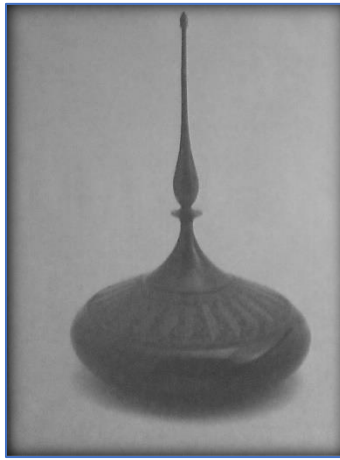
Example of peircing



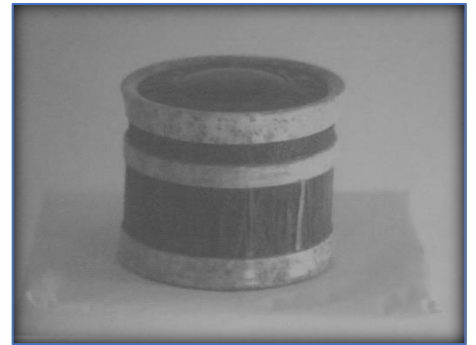
Piercing/carving



Carving



Multiple techniques



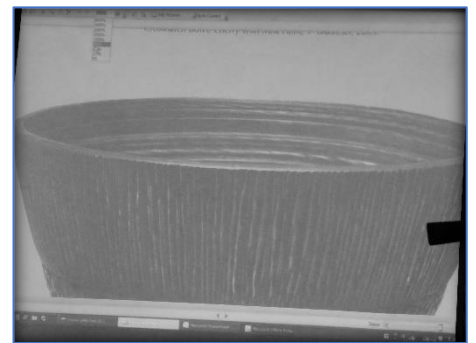
Dremel carving and burning



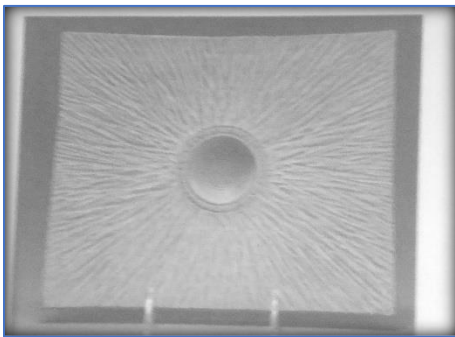
Dremel



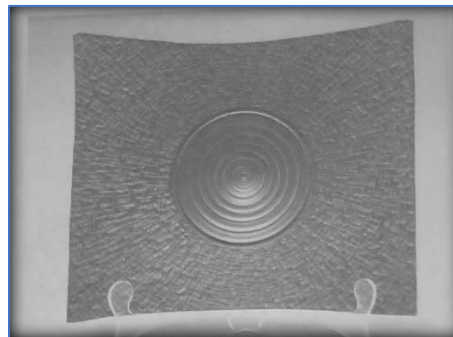
Carving



Carving



Carving



Carving, coves and beads can be combined



Sorby texturing tool examples



June Show and Tell



Paul Guilbeault mixed woods and resin



Paul Guilbeault, coffee beans



Paul Guilbeault, black pine gall



Paul Guilbeault, black pine gall



Dave Hudgel, small propeller bowl(in-process)



Ruby Cler, pistachio "fish" vase, look at it turned 90 degrees.



Nick Henshaw a bowl from public school wood shop. This is what started Nick wood turning.



Nick Henshaw's bowl of "mystery wood" with a butcher block finish. Great progress from his his "woodshop" days"!



Kyle Desjardine. Hard maple with textured rim (used a Dremel tool for texturing) and finished with Shellwax



Ruby Cler, examples of turning, texturing and bending by utilizing a heat gun



Ruby Cler shows hand forged and tempered tools she made and used in the turning of the previous items.



Doreen Bowden, a maple floral arrangement pierced and painted (there is a small butterfly tucked inside looking for nectar).



Doreen Bowden, maple flower pierced and painted.



Gary Miller, an experimental shape of box elder and baltic birch



The 1st Annual TYWTG Competition

Our **1st Annual Turning Competition** is slated for our September meeting and this year will be judged by the membership. A set of competition rules are online at our website. **With a full two summer months** to complete your entries we expect to be dazzled by your entries. We will remind you during the summer in case you forget...

- Judging will be by you the members on September 12th. At our September meeting
- The **Woodstock Woodworking Show** is in late September and we hope that the entries you turn for the Guild competition will be either entered in the Woodshow or placed on display at our booth at the Woodshow.
- Copies of the competition's rules are on our website <http://www.thamesvalleywoodturners.com/> or contact Bob Hewson at 66.bobhewson@gmail.com.



"Tops for Tots" follow-on Challenge

The President's challenge "**Tops for Tots**" is over and was a smashing success with another 130 tops delivered in June. We are challenging the membership to continue making **Tops** for this most worthy of causes during the summer months and into the fall. We will have a collection box available at each meeting to collect additional tops.

The **Tops** will be delivered to the Children's Health Foundation as they accumulate.



Turning 101, spindle turning



Learning tool placement (Rene Sferazza, Doreen Bowden, and Joanne Montgomery)



Dan Walton, Bob Harvey, Eric Deckert



Jackie Morningstar and Jack McGauley



Practice the basics and ease with the tools will come, even the skew! (Eric Judd)



New start time

At the request of several members who have a long drive to attend our meeting we have decided to try starting our meetings at 7:00, one half hour earlier than in the past.

This new time will begin with our September meeting.

Calendar of events for the 2018-2019 season

Date	Meeting or events	Shows/events/comments		
January 10 th 2019	Monthly meeting	Jigs and tips, a member participation evening		
February 14 th	Monthly meeting	Carl Durance, will do a hollow egg demonstration.		
March 14 th	Monthly meeting	Dave Bell shows us the use of epoxies to repair and embellish a turning that might otherwise be scrapped.		
April 11 th	Monthly meeting	An Egg Challenge. A box turning technique by John Calver. John will show us how to make a basic box then how to add a little pizzazz to it.		
May 9 th	Monthly meeting	A propeller bowl by Dave Hudgel.		
June 13 th	Monthly meeting	Texturing – different techniques by Gary Miller, discussion and demo of techniques. Announce a President's challenge for November. Tool Swap and wood sale night for members. Rules available for the <u>1st annual Turning Competition</u>		
September 12 th	Monthly meeting and competition	<u>Our guild's 1st annual Turning Competition</u> . Judging will be by the membership. Segmenting using a "wedgie" sled by Bob Fenn.		
September 27 th – 29 th	Show	Woodstock Woodworking Show participation.		
October 10 th	Monthly meeting	Hollowing demonstration by Dave Bell).		
November 14 th	Monthly meeting	Hands-on lathe turning at meeting. Multiple active turning stations in lieu of a normal meeting. Our sharpening station will also be active. <u>Textured box challenge</u> based on earlier demos in April meetings by Calver and June by Miller.		
December 12 th	Monthly meeting	- Christmas social. - Ornament challenge/exchange. - Show and Tell (Bring in some of your favourite turnings turned this year).		
January 9 th 2020	Monthly meeting	Another Jigs and Tips meeting for Jan. Business meeting for the Guild (change of bylaws if required and review of finances)		
Ideas	We welcome member input for meetings	-Guest turners or seminars. -Design? What makes a "good" turning into an "outstanding" turning? -Metal spinning -A safety night (discussion/panel) -Salt box	-Homebuilt kiln/ drying wood -A simple weed pot -Sharpening refresher -Basic drying of wet wood -A seed-pod turning	-Shear scraping -Inlace -Finishing -Chucking and holding -Jigs and fixtures -A wall clock or a desk clock

Notes

- Meetings start at **7:00, doors open at 6:30. The open period from 6:30 and 7:00** is a great time to discuss problems or successes at the "**Show and Tell**" table and converse with other members.
- **There may be last minute schedule changes** due to weather or other unforeseen causes, if in doubt, check the website for the latest meeting info as the date draws near.
- **Raffle tickets** and the **library** are usually available between 7:00 and 7:30 as well as during the break period.



Items wanted and for sale

Ads are free for members and run until you sell your item or withdraw your advertisement. To run an ad or to remove one, call or email Bob at 519-457-6555 or 66.bobhewson@gmail.com. Members support other members by **buying or selling - good deals and at good prices!** Ads when received are sent to our mailing list which cover our membership as well as surrounding Guilds. The ad is published in our newsletter until sold or removed.

Commercial "business card" advertisements are available on this newsletter for \$30 for insertion into 5 - 6 issues per year.

Please note: The Guild provides a means of connecting buyer and seller through these ads. It is up to the buyer to ensure the item offered is as stated and the two parties should agree between them as to any warranty/guarantee. The Guild does not accept any liability for any such sale.

Sales tables: Members are welcome to set up a "sales" table in the bar section/room during **Swap night** at our June and September meetings.

We issue our newsletter targeting every two months. Our newsletter is found in glorious **colour** on the internet at <http://www.thamesvalleywoodturners.com/>. Any newsletter photos are available to members by request to the Editor (66.bobhewson@gmail.com).

For Sale

Steel City Electronic variable speed Lathe

- 10 x 18
- C/W spur
- Live centre
- Jacobs chuck
- 4 jaw chuck

Price: \$450

Articulated arm (Hunter tool) boring jig C/W carbide tip ring

Price: \$160

Contact: Bob Fenn 519-455-7436
emailrafenn@rogers.com

Laser engraving and 3D printing

I have a 3D printer which enables me to print custom plastic items.

I also have a laser engraver that will burn a pattern on flat stock wood, turnings, or in the round as well, or card stock.

I am also able to engrave on slate as show by the Guild logo coaster examples I have shown **at Show and tell and Swap night**.

If you are interested in having experimental or custom work done in these areas please contact me.

Bob Hewson: 519-457-6555 or
66.bobhewson@gmail.com



Hamilton Mountain, located at

1361 Rymal Rd. E., Hamilton, Ontario L8W 3N1

Phone: [905-388-0784](tel:905-388-0784)

Fax: 905-388-9745

Email: sales@tegstools.com

Visit our web site <https://www.tegstools.com/>

See our Lathes:

<https://www.tegstools.com/woodworking-machinery-lathes>