

# Thames Valley Woodturner

*A publication of the Thames Valley Woodturners Guild (since 1997)*

*(Meetings held at 2155 Crumlin Side Road, London)*



## Contents

Business meeting including Treasury & Executive	P1
Internet sites of interest	P1
November meeting (John's "Wonkey" shape)	P2
November show and tell	P3
December meeting (Eric's "windswept" tree)	P5
December show and tell	P6
Tops for Tots follow-on	P7
Calendar	P8
"For Sale & Wanted" ads	P9

Any member wishing to contribute content to the newsletter in the form of articles, tips, or want-ads PLEASE contact

Bob Hewson (Photos, articles, photo-articles).

For a Guild info/policy sheet or mentors list, call or email

Bob Hewson at [66.bobhewson@gmail.com](mailto:66.bobhewson@gmail.com) or refer to our web site at: <http://www.thamesvalleywoodturners.com/>

## Volume 21.5, November and December 2018.

### Business meeting

A quorum of Guild members was present thus our annual business meeting was held.

- The state of our treasury is \$2,739 in the bank at the end of December. Our finances and new ledger system were reviewed with the membership.
- Our updated constitution was approved unanimously by the members after a motion by John Scott and seconded by Bill Orłowski. A copy of the Constitution and our bylaws is available on the Guild's website.
- We have taken steps to bring two international turners to the Guild in 2019 and 2020. Nick Agar in 2019 and Jimmy Clewes in 2020
- Our new Guild logo was introduced (see upper left of this page). Branded wear will be determined in the new year. Also shown is the new AAW logo in the upper right of the page.
- Elections were held and the current executive have agreed to run for another year (there were no other nominations for office). Your

executive is listed below.

- The existing executive were polled and were asked if they would serve another term, most agreed and were acclaimed for 2017.
- Your Guild executive for the 2019 term is:

**President** is John Scott (519-641-2522) [President@thamesvalleywoodturners.com](mailto:President@thamesvalleywoodturners.com)

**Past President** is Paul Newton (519-883-0928, [paul.newton@architext.ca](mailto:paul.newton@architext.ca))

**Treasurer** is Bob Fenn (519-455-7436) [ww-wt@rogers.com](mailto:ww-wt@rogers.com)

**Secretary/Newsletter editor** is Bob Hewson (519-457-6555), [66.bobhewson@gmail.com](mailto:66.bobhewson@gmail.com)

**Video librarians** is Roy Phillips (519-471-3707)

**Webmaster** is Eric Deckert (519-432-6545), [emdeckert@gmail.com](mailto:emdeckert@gmail.com)

**A/V coordinator** is Scott Beverley (519-681-5565), [sbever1073@rogers.com](mailto:sbever1073@rogers.com)

**Program committee** members are:

Bill Orłowski (519-473-5078) [Bill.orlowski@outlook.com](mailto:Bill.orlowski@outlook.com) (collection of money for seminars and dues)

Carl Durance (519-534-1540) [lazy.bee@bmts.com](mailto:lazy.bee@bmts.com)

Jackie Morningstar (519-264-2970) [jmorningstar39@gmail.com](mailto:jmorningstar39@gmail.com)

The executive would also like **to thank the many other un-named members** who help in the set-up and take-down of the meeting room, clean-up, and the many other things which make the guild operate smoothly.



### Interesting internet sites for members

*Members can submit sites of topical interest for this feature by emailing me ([66.bobhewson@gmail.com](mailto:66.bobhewson@gmail.com))*

To find virtually any topic you can imagine, try typing your query as a literal question into Google's search box and see the breadth of information you can find.

The [colored highlights](#) are **hotlinks**, click them and they go directly to the website, if that doesn't work copy the link into your browser. You can make your searches for **images** only by choosing **images** from the choices sub menu below the search box.

- I saw an intriguing article in the Free Press on Edo-style wooden tops. It is hard to really determine what is unique from the photo and write-up, so off to Google land. The article is on Google (what isn't) at <http://www.asahi.com/ajw/articles/AJ201810310018.html> The Japanese master is Michiaki Herol. There is a video which show him at work in his shop/studio and some of his tops including the Edo-Style top constructs. Well worth a look <https://vimeo.com/channels/1099071/170477722>
- Here are new style pen kits if you are musically inclined <https://www.woodturningonline.com/newandhot/new-and-hot.php?id=186>



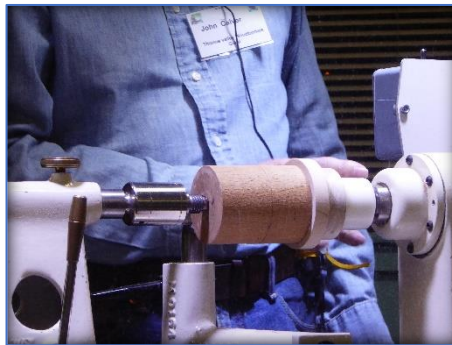
## ***November meeting***

John Calver is this months demonstrator turning his “Wonky” off-center shape. This can be accomplished using a special custom jig or a simple home-made jig.

The finished shape can be used as a nifty off center box, a base for a clock, or simply a decorative shape made from a beautiful piece of wood.



*John Calver with the turnig to be demonstrated tonight*



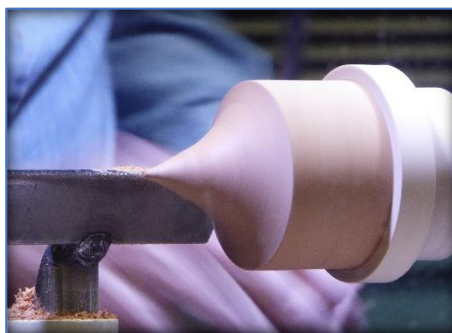
*Start with billet glued to wooden faceplate*



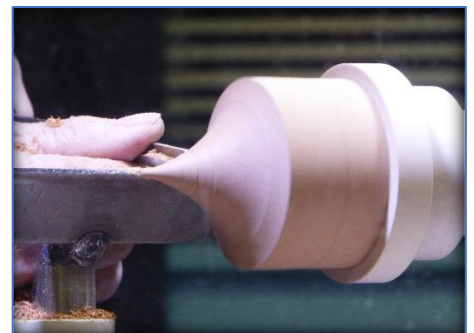
*Start*



*Safety 1st - Always use your face shield!*



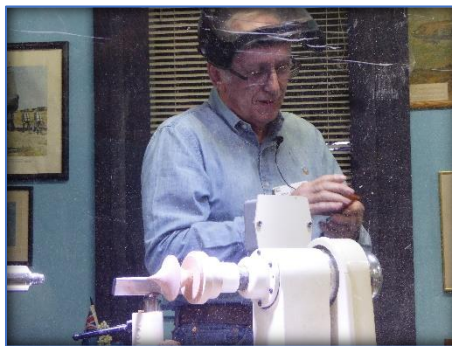
*Maintain the curve*



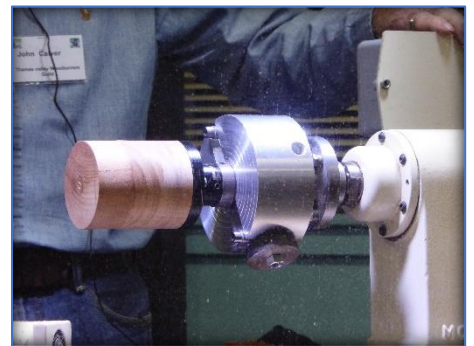
*Refine the curve*



*Measure*

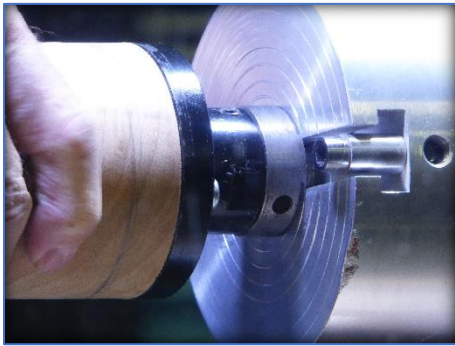


*Now ready to part off*

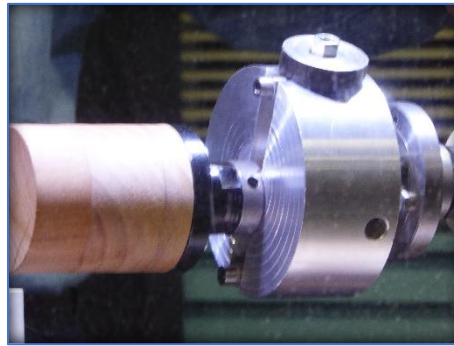


*Next shape, this piece is mounted on a custom made offset chuck. Note the counter-weight that will smooth out any vibration.*

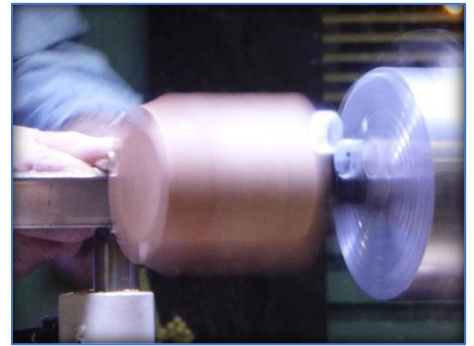




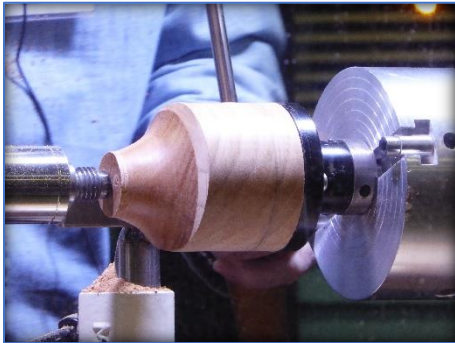
*How the jig enables center axis to be moved in/out from center.*



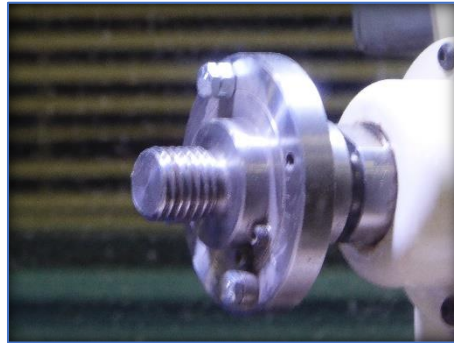
*Note offset and counterbalance weight to stop vibration*



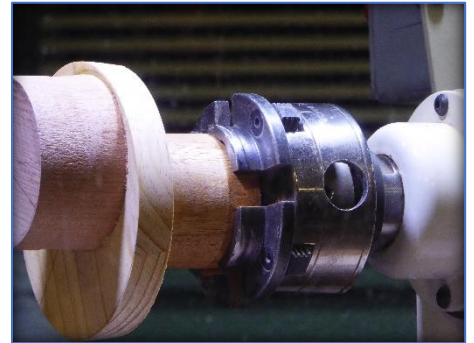
*You turn a lot of air*



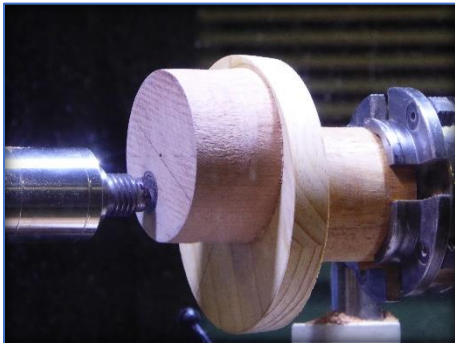
*Off center shape is beginning to appear*



*Detail of the custom chuck*



*Home built method using a wooden faceplate with workpiece glued off-center*



*Offset made of wood with piecefastened with hot-melt-glue*



*Taking shape*



*"Wonkey" shape with a finial in place as an option.*



## November Show and Tell



Gary Miller, Olivewood with Shellowax finish



John Scott, Cherry with Shellowax and c/a finish



Note Swarovski crystal in the base of box, nice touch for a gift box



Claude Bolduc with a creative way to use small pieces, wipe-on poly finish



Claude Bolduc, segmented bowl with wipe-on poly finish



Doreen Bowden, natural edge maple 23 coats of Formby's finish!



Claude Bolduc, segmented bowl with wipe-on poly finish



Interior view



Peter Binkley, walnut with a friction polish finish



Perer Binkley, cherry with a friction polish finish



Peter Binkley, maple with friction polish finish (from the bowl workshop)



Interior grain



Dave Hudgel Box elder (no finish)



Dave Hudgel, maple natural edge bowl



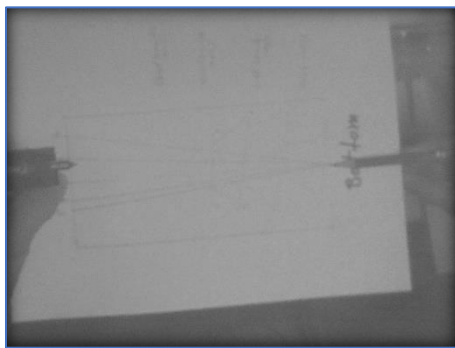


## December Meeting

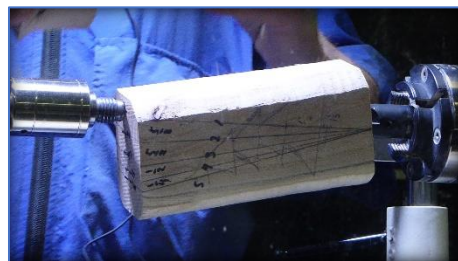
Eric Deckert shows how to turn a stylised windswept tree decoration. This project is a form of off-center turning and requires careful measurements.



*This is the form Eric will turn*



*A sketched plan is a good starting point to determine the degree of "wind swept" tilt and where the off center point will be.*



*This shows how the turning will progress with the various centers and the angle the "branches" will take. Info derived from the sketch.*



*You are turning a lot of "Air", so be really careful as you turn.*



*Next center for next "branch"*



*Ready for next center and 4th "branch"*



*Ghosting*



*Towards the end*



*The end*

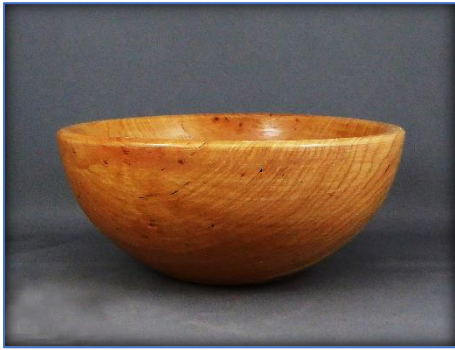


*Windswept, ready to finish.*

Natural finishes, a green dyed finish or acrylic finishes would be a great end to this project.



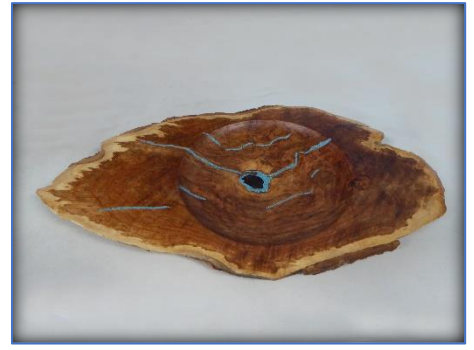
## December Show and Tell



Nick Henshaw, maple finished with "butcher block". Nick's bowl from the bowl turning workshop



Nick Henshaw, maple finished with "butcher block"



Dave Hudgel natural edge bowl with epoxy/turquoise highlights



Santa, a 3D printed figure painted with acrylic by Bob Hewson



Snowman, a 3D printed figure painted with acrylic by Bob Hewson



John Scott, mystery wood with Formby tung oil finish



Bob Harvey, maple bowl with min-wax urethane finish. Bowl is from bowl seminar.



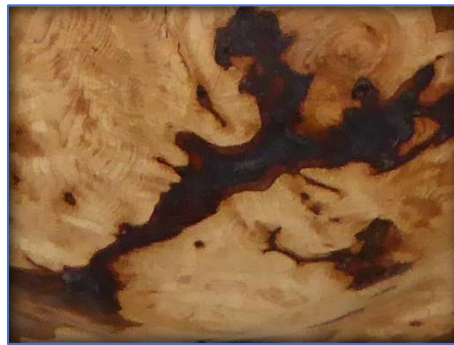
Dave Rubenhagen's hollow sphere made with a sphere jig he made for his metal lathe



Spalted lidded maple and walnut bowl by Joe Wallace



Doug Magrath, natural edge bowl with epoxy fill by Dave Bell



Close-up of repair



Joe Wallace, wood is either spruce or pine





*Christmas tree ornaments by Bob Fenn, hardwoods, Banksia pods, and Sea urchins*



*Doreen Bowden, pierced maple egg and finial. Pearl white acrylic on egg and black ink on finial*



*Doreen Bowden, 6 piece pierced flower with an Alomalite bud in the bottom and a wood butterfly, acrylic paint.*



### **President's Summer "Tops for Tots" follow-on Challenge**

While the President's challenge "Tops for Tots" is over and was a smashing Success we would like to ask the membership to continue making Tops for this most worthy of causes. We will have a collection box available at each meeting to collect additional tops. We will deliver them to the Children's Health Foundation as they accumulate.



## Calendar of events for the 2018-2019 season

Date	Meeting or events	Shows/events/comments		
June 14 <sup>th</sup>	Monthly meeting	Neal Hardie (Golden Horseshoe) turns decorative tops. "Tops Challenge" for June and September to be carried out over the summer.		
September 13 <sup>th</sup>	Monthly meeting	Charles Jordan from Grey Bruce Guild - Finishing and Dyeing President's <b>Tops for Tots</b> challenge		
September 28 - 30	Show	Woodstock Woodworking Show participation.		
October 11 <sup>th</sup>	Monthly meeting	Al Tammen, a "Dizzy Goblet"		
October 27	Workshop	Bowl turning workshop for novices. Co-ordinated by Dave Hudgel		
November 8 <sup>th</sup>	Monthly meeting	John Calver demonstrates a "wonkey" off-center turning		
December	Monthly meeting	Eric Deckert, a "Windswept pine tree"		
January 10 <sup>th</sup> 2019	Monthly meeting	Jigs and tips, member participation evening		
February 14 <sup>th</sup>	Monthly meeting	Carl Durance, will do a hollow egg demonstration.		
March	Monthly meeting			
April	Monthly meeting			
May	Monthly meeting			
June	Monthly meeting			
Ideas	Member input for meetings is welcome	-Guest turners or seminars. -Design? What makes a "good" turning into an "outstanding" turning? -Metal spinning -A safety night (discussion/panel) -Salt box	-Homebuilt kiln/ drying wood -A simple weed pot -Sharpening refresher -Basic drying of wet wood -A seed-pod turning	-Shear scraping -Inlaid -Finishing -Chucking and holding -Jigs and fixtures. -A wall clock or a desk clock

### Notes

- **Meetings start** at 7:30, doors open at 7:00. The open period from 7:00 and 7:30 is a great time to discuss problems or successes at the **"Show and Tell"** table and converse with other members.
- **There may be last minute schedule changes** due to weather or other unforeseen causes, if in doubt, check the website for the latest meeting info as the date draws near.
- **Raffle tickets** and the **library** are usually available between 7:00 and 7:30 as well as during the break period.





## Items wanted and for sale

Ads are free for members and run until you sell your item or withdraw your advertisement. To run an ad or to remove one, call or email Bob at 519-457-6555 or [66.bobhewson@gmail.com](mailto:66.bobhewson@gmail.com). Members can support other members by **buying or selling: good deals and at good prices!** Ads are first emailed to our mailing list, if not sold the ad is published in our newsletter as well.

**Commercial “business card” type** advertisements are available on this newsletter too for \$30 for insertion into 5 - 6 issues per year.

**Please note:** The Guild provides a means of connecting buyer and sellers through these ads. It is up to the buyer to ensure the item offered is as stated and the two parties should agree between them as to any warranty/guarantee. The Guild does not accept any liability for any such sale.

**Sales tables:** Members are welcome to set up a “sales” table in the bar section/room during our Swap nite at our June and September meetings.

**We issue our newsletter** on a non-date-specific schedule, generally every two months. Our newsletter is found on the internet at <http://www.thamesvalleywoodturners.com/> in glorious **colour**. Any newsletter photos are available to members by request to the Editor ([66.bobhewson@gmail.com](mailto:66.bobhewson@gmail.com)).

### For Sale

#### **Steel City Electronic variable speed Lathe**

- 10 x 18
- C/W spur
- Live centre
- Jacobs chuck
- 4 jaw chuck

**Price: \$450**

Articulated arm (Hunter tool) boring jig C/W carbide tip ring

**Price: \$160**

**Contact: Bob Fenn** 519-455-7436  
[emailrafenn@rogers.com](mailto:emailrafenn@rogers.com)



#### **Hamilton Mountain, located at**

1361 Rymal Rd. E., Hamilton, Ontario L8W 3N1

Phone: [905-388-0784](tel:905-388-0784)

Fax: 905-388-9745

Email: [sales@tegstools.com](mailto:sales@tegstools.com)

Visit our web site <https://www.tegstools.com/>

**See our Lathes:**

<https://www.tegstools.com/woodworking-machinery-lathes>

### FOR SALE

General Model #25-200 Maxi-Lathe VS+,

- Cast iron frame, head & tailstock
- Max. 17 5/16" between centres
- 3 variable speed ranges
- Digital speed display
- Headstock pivots for outboard turning
- 12" swing over bed
- 19 1/4" swing over outboard bed
- 1" - 8 TPI
- MT #2 Morse taper head & tailstock
- 3/4 HP Motor, 110 V, 8 A, 2500 RPM

**Price: \$750**

**Contact:** Greg Lisson 519-457-0882 or [glisson@gtn.net](mailto:glisson@gtn.net)

