



# Thames Valley Woodturner

A publication of the Thames Valley Woodturners Guild (since 1997)

(Meetings held at 2155 Crumlin Side Road, London)



Shows worth seeing

**Segmented Woodturning Symposium** Oct 11-14, 2018  
at Marriott West Hotel, St. Louis Missouri (for info see  
[www.segmentedwoodturning.org](http://www.segmentedwoodturning.org))

## Contents

Treasury	P1
Internet sites of interest	P1
May meeting (Add a skew to your arsenal Gary Miller)	P2
May show and tell	P3
Roman Flask challenge	P5
June meeting (Neal Hardie – humming top)	P6
June show and tell plus ornament challenge	P8
Paul Newton honoured	P10
Calendar	P11
"For Sale & Wanted" ads	P12

Any member wishing to contribute content to the newsletter  
in the form of articles, tips, or want-ads PLEASE contact

Bob Hewson (Photos, articles, photo-articles).

For a Guild info/policy sheet or mentors list, call or email

Bob Hewson at [66.bobhewson@gmail.com](mailto:66.bobhewson@gmail.com) or refer to our  
web site at: <http://www.thamesvalleywoodturners.com/>

## Volume 21.3, May and June 2018.

### Treasury

\$4428 in the bank and all bills are current at end of May. The Lucas seminar was a financial success.



### Internet sites of interest to members

To search on virtually any topic you can imagine, try typing your query as a literal question into the Google search box and see the breadth of information you can find.

Included are web sites that may be of interest to many of us as turners, woodworkers or hobbyists. The **colored highlights** are **hotlinks**, click them and they go directly to the website, if that doesn't work copy the link into your browser's address box. You make your searches for **images** too by choosing **images** for your search.

- Alan Batty's video can be found at the following YouTube site: <https://www.youtube.com/watch?v=KfeLAHQSBgk>
- Alan Batty also has a video on hand chasing of threads: <https://www.youtube.com/watch?v=-0iEd0kD0S4>
- Turning goblets from a tree (from the Highland

Woodturner): [https://www.highlandwoodworking.com/woodturning/woodturning-goblets-from-a-tree.html?utm\\_source=iContact&utm\\_medium=email&utm\\_campaign=highland-woodturner&utm\\_content=HWT+May+2018](https://www.highlandwoodworking.com/woodturning/woodturning-goblets-from-a-tree.html?utm_source=iContact&utm_medium=email&utm_campaign=highland-woodturner&utm_content=HWT+May+2018)

- Interested in a low-cost photo tent? This is a long web site address, but has what you may want: [https://www.aliexpress.com/item/Gosear-60-x-60cm-Foldable-Photo-Studio-Shooting-Tent-Light-Diffusion-Soft-Box-Softbox-with-4/32860387001.html?spm=2114.search0104.3.104.16982eb5ILCCJE&ws\\_ab\\_test=searchweb0\\_0,searchweb201602\\_3\\_10152\\_10709\\_10151\\_10065\\_10344\\_10068\\_10342\\_10343\\_10340\\_10341\\_10697\\_10696\\_10084\\_10083\\_10618\\_10304\\_10710\\_10307\\_10302\\_10059\\_308\\_100031\\_10103\\_441\\_10624\\_10623\\_10622\\_10621\\_10620,searchweb201603\\_32,ppcSwitch\\_3&algo\\_expId=84323b09-0360-4464-a605-01c07fc8fff6-15&algo\\_pvid=84323b09-0360-4464-a605-01c07fc8fff6&priceBeautifyAB=0](https://www.aliexpress.com/item/Gosear-60-x-60cm-Foldable-Photo-Studio-Shooting-Tent-Light-Diffusion-Soft-Box-Softbox-with-4/32860387001.html?spm=2114.search0104.3.104.16982eb5ILCCJE&ws_ab_test=searchweb0_0,searchweb201602_3_10152_10709_10151_10065_10344_10068_10342_10343_10340_10341_10697_10696_10084_10083_10618_10304_10710_10307_10302_10059_308_100031_10103_441_10624_10623_10622_10621_10620,searchweb201603_32,ppcSwitch_3&algo_expId=84323b09-0360-4464-a605-01c07fc8fff6-15&algo_pvid=84323b09-0360-4464-a605-01c07fc8fff6&priceBeautifyAB=0)
- Here is a suggestion for a chisel holder that can be placed near your lathe: [http://www.instructables.com/id/Lathe-Tool-Holders/?utm\\_source=newsletter&utm\\_medium=email](http://www.instructables.com/id/Lathe-Tool-Holders/?utm_source=newsletter&utm_medium=email)
- Turning a sphere: [http://www.instructables.com/id/Perfect-Wooden-Sphere/?utm\\_source=newsletter&utm\\_medium=email](http://www.instructables.com/id/Perfect-Wooden-Sphere/?utm_source=newsletter&utm_medium=email)
- See several other sites after the June meeting article.



## May meeting

Gary Miller was May's demonstrator and his topic was **"Add a Skew to Your Arsenal"**. Many members have a fear of the skew for some reason, but mostly because no one has really taken the time to show them what a skew can do and how to use it. Gary's goal for the evening was to dispel fear, show the skew's versatility and how to use it.

Gary's plan was to start with a video by Alan Batty linking to the building's wi-fi however the wi-fi was too feeble to do the job so he covered the similar content. (Alan Batty's video can be found at the following YouTube site: <https://www.youtube.com/watch?v=KfeLAHQsbqk> ).

Gary has supplied us with a number of photos from the turner's vantage point. For maximum information, please watch the Batty video and refer to the photos that follow for added detail.

### ***Add the skew to your arsenal, based on Gary Miller's demo at the May meeting.***



**#1 Peeling cut**

- blade parallel to base
- bevel touching
- no more than 3/8" at a time



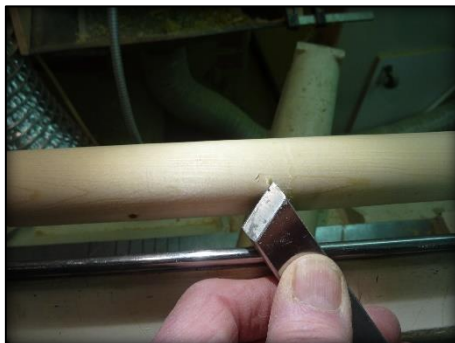
**#2 Planing cut**

- lower half of blade
- blade at 45 deg to the base
- bevel touching



**#3 Hand rotation**

- shows peeling cut just beginning at the lower half of the blade



**#4 Planing cut showing toe getting too low and catch happens**



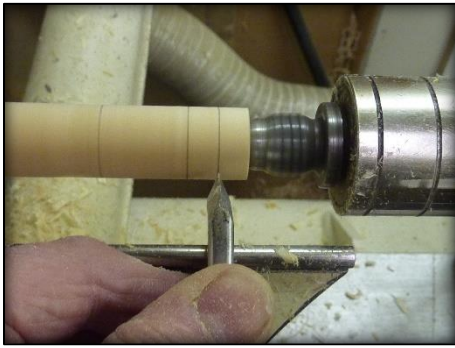
**#5 Peeling cut.**

- blade not parallel to the base.
- bevel not rubbing. point starts to catch



**#6 Frontal view of cut with the toe of the skew**

- Also used to make "V" cuts



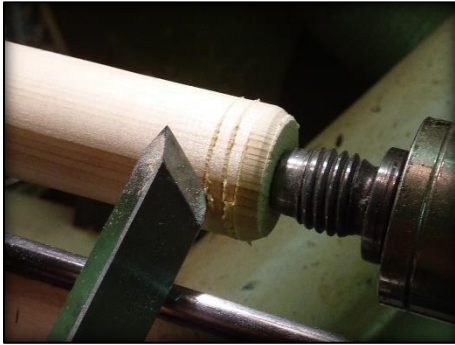
**#7 Top view**  
**-same cut as #6**



**#8 Squaring off with toe of the skew. Note, leave slight angle away from the cut to avoid catches, but, rub bevel at the toe**



**#9 Same cut as #8, without the slight angle.**  
**-Note, the catch is beginning to happen**



**#10 Attempt to roundover using heel point**  
**-blade too low to cut with point of heel resulting in too much blade touching front of the workpiece and unintended "spiral"**



**#11 Pointing out the "heel" and the small amount of bevel to touch the workpiece**

Photos and text by Gary Miller as presented at the TVWTG May 2018 meeting



## May Show and Tell



**Paul Jackson, nested natural edge bowls**



**Kyle Desjardine, hard maple with friction polish finish**

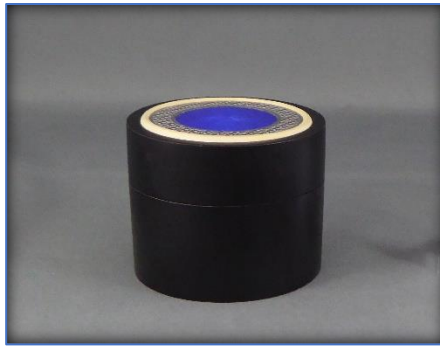


**Kyle Desjardine, acrylic pen with hi-gloss finish**





***Interesting floral design by Doreen Bowden. Consists of 3 turned elements, pierced, and finished in white. The central pink. The central pink element is a colored Alumalite highlight. Nicely done!***



***John Calver, ebonized maple box, detailed top with boxwood insert, and silver disc which has rose-engine guilloched patterns applied before a blue enamel was applied. . The silver trim piece was commercially stamped.***



***Platter turned by Glen Lucas and finished by Bill Orlowski***



***Kyle Desjardine, Hard maple with black Sharpie detail line***



***Bill Orlowski, 9" bowl finished with Shellwax***



***Huge bowl by Dave Hudgel, too big to fit the photo-tent***



***Joe Wallace, cherry with a Shellwax finish***



***Bernie Hrytzak, honey locust set on the left is completion of April's demonstration pepper mill***



***Al Tammen, wig stand made of Walnut, cherry, spalted birch, and finished with Tung oil***



***Al Tannaman, cherry with walnut oil finish (10")***



***Al Tammen, "Beads of Courage" lidded bowl with a tung oil finish***



***Abstract by Gary Miller***



***Mike Malone, honey locust with mineral oil finish***



***John Scott, natural edge cedar bowl with wipe-on-poly finish***



***John Scott, cherry with a shellwax finish***



## **Roman Flask Challenge**



***Gary Miller flask with detail ring and engraved center medallion.***



***Bernie Hrytzak's flask with aged patina finish.***



***Kyle Desjardin, e mini flask.***





**Bernie Hyrtzak's flask (made several years ago)**



**Winners of the "Roman Flask" Challenge. Open: Gary Miller-1st; Bernie Hyrtzak-2nd. Intermediate: Kyle Desjardine-1st**



## June Meeting

Our June meeting featured Niel Hardie from the Grey-Bruce Guild on the topic of spinning tops and in specific the turning of a singing/humming top.

The turning topic was in keeping with our summer **President's Tops for Tots challenge**, more about this later.

Rather than redo a photo article on turning the humming top I will refer you to the internet article

<http://www.davidreedsmith.com/Articles/WhistlingTop/WhistlingTop.html> by David Reed Smith who does an excellent job using the same techniques as Neal used.

There are articles on the techniques and the mechanics behind the humming top that are readily available on the net with a few simple Google searches.

See Stuart King on the web

<https://www.practicalmachinist.com/vb/general/need-information-regarding-making-whistling-humming-metal-tops-326563/>

David Reed Smith - humming top plus many more articles of interest to turners:

[https://www.morewoodturningmagazine.com/writer\\_profile.php?writerid=9](https://www.morewoodturningmagazine.com/writer_profile.php?writerid=9)

and <http://www.davidreedsmith.com/Articles/TopPlayground/TopPlayground.html>



## Refences:

### **Books on tops**

Tops - Making the Universal Toy by Michael Cullen (\$25 + tax at Chapters/Indigo)

Small woodturning projects with Bonnie Klein (\$16 + tax at Chapters/Indigo)

### Internet

Mosaki Heroi: Noodle eater: <https://www.youtube.com/watch?v=uHuT03G6n-o>

Old master makes spinning fun: <http://muralform.com/2017/80-year-old-masaaki-hiroi-makes-spinning-toys-for-fun/>

Check out **YouTube** for others too as masters of the art.



## ***President's Summer Turning Challenge***

Your executive has been looking at several turning "projects" to be used in a Guild charitable effort as well as to be a fun and challenging project for you, the members.

We think we have a winner in this year's President's **Tops for Tots** challenge, to take place over the summer months.

The challenge is to turn 2 or more spinning tops per member and we will have about 200 tops to hand out to children who need a smile brought to their faces.

Your TVWG Exec is working on a channel to distribute the tops and is evaluating several. As soon as determined we will advise you.

Please bring your tops to the September meeting (watch for Challenge reminders during the summer).

As with any child proof toys we need a few simple guidelines that follow:

### **Guideline for tops**

- One piece
- Minimum 1.75" diameter
- No sharp points or edges
- Sand to 400 grit
- Colour with water-based markers only
- No finish except for carnauba wax
- Avoid wood from nut producing trees



## June Show and Tell



**Carl Pardy, large container turned from red cedar with a wipe-on poly finish.**



**Turned cane with antler handle, by Claude Bolduc**



**Paul Guilbeault vessel from recycled flooring with epoxied waterproofed interior**



**From Ruby Cler. The reddish box is a tropical "nut" pod with the finial from it's nut. In addition, 3 small oval turnings, 2 lidded boxes and a frame. Materials are Thika nut, maple, yew and cherry.**



**Ruby Cler. All shapes are boxwood. From left to right: an octahedron with a star inside, a set of Siamese spheres interlocked (all one piece), and a hexahedron with a star.**



**"A Cosmic design modification opportunity" by Mike Malone on a walnut platter**





***Paul Guilbeault an Urn from recycled flooring with threading made from ABS pipe fittings***



***Joe Wallace, maple bowl on an oak foot (rim detail a-la Glen Lucas)***



***Joe Wallace, Walnut bowl on a maple foot (rim detail a-la Glen Lucas)***



***Mike Sbrocca, maple burl finished with polymerized tung oil***



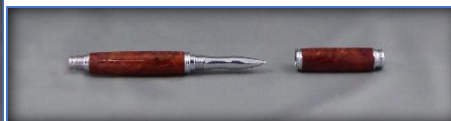
***Mike Sbrocca Red Oak blackened.***



***Two small box elder bowls by Kyle Desjardine and finished with Tung oil.***



***Cherry pen with carnauba wax finish by Kyle Desjardine***



***Red Amboyna burl by Kyle Desjardine with a CA finish***



***Acrylic razor with Hut plastic finish by Kyle Desjardine***



***John Calver's construct of steamed pear, figured walnut, tiger maple. Base finished in black gesso, balance in lacquer***



***Doreen Bowden, thin wall cherry vessel with finial. The finish is 17 coats of Formby's tung oil!***



### **Paul Newton honoured**

Paul was presented with a certificate of appreciation for his service to the Guild as President and was awarded lifetime membership.

Paul has been a member since April 2010 and President since January 2014.

Paul has been instrumental in starting a new Guild in the Kitchener Waterloo area and currently holds its Presidency too. A heavy workload indeed and we reluctantly accept his resignation as our President. Paul is replaced by our former Vice President John Scott.



Paul receives life membership and plaque for service to the Guild from Eric Deckert, a past President of the Guild, and on behalf of the membership.



## Calendar of events for the 2017-2018 season

Date	Meeting or events	Shows/events/comments		
Sept 14 <sup>th</sup> 2017	Monthly meeting	Don Turcotte of Grey/Bruce will demonstrate carving/ turning technique similar to Dixie Boggs turning as seen at <a href="http://dixiebiggs.com/">http://dixiebiggs.com/</a> See pictures of Don's work earlier in the newsletter.		
Sept 29 <sup>th</sup> – Oct 1 <sup>st</sup>	Woodstock Woodworking show	<b>Woodstock Woodworking show</b> , we are participating again this year. Volunteers are needed; please contact Scott Beverley if you can volunteer. There will be a People's Choice competition for items turned in the last 12 months.		
Oct 12 <sup>th</sup>	Monthly meeting	A Staved Bird house, full size by Bob Fenn.		
Nov 9 <sup>th</sup>	Monthly meeting	Carl will show us how to incorporate veneers into our turnings as well as techniques for working with veneers		
Nov 18 <sup>th</sup> 9:00 to 4:00	Workshop	Tool specific (carbide cutter tools too), as many as 4 turners per machine/rotation). Turners will rotate through to the next station. A maximum of 20 attendees. There is no charge for this workshop. Please bring your own tools and lunch.		
Dec 14 <sup>th</sup>	Monthly meeting	Election of Guild's Executive Eric will show us how to turn a sphere. (No Christmas social this year, but we will have an <u>Ornament Challenge</u> and an ornament exchange - <i>the exchange ornament need not be your challenge ornament</i> ), For this night we will pass on Show and Tell, but bring your items in for January.		
Jan 11 <sup>th</sup> 2018	Monthly meeting	Remember please bring in <b>Show and Tell</b> items for January. John Calver will demonstrate how to develop a high gloss finish		
Feb 8 <sup>th</sup>	Monthly meeting	Paul Newton, a Roman flask		
March 8 <sup>th</sup>	Monthly meeting	Bob Fenn demonstrates a bowl emerging from a block.		
April 12 <sup>th</sup>	Monthly meeting	Bernie Hrytzak will do a pepper mill.		
April 14 <sup>th</sup> 8:30 – 5:00	Seminar	Glen Lucas seminar (\$50 includes lunch). Please note 8:30 start.		
May 10 <sup>th</sup>	Monthly meeting	Gary miller demonstrates the skew. A challenge for May is to turn a Roman drinking flask.		
June 14 <sup>th</sup>	Monthly meeting	Neal Hardie (Golden Horseshoe) turns decorative tops. "Tops Challenge" for June and September to be carried out over the summer.		
October 27	Workshop	Bowl turning workshop for novices. Co-ordinated by Dave Hudgel		
Ideas	Member input for programming is welcome	-Guest turners or seminars. -Design? What makes a "good" turning into an "outstanding" turning? -Metal spinning -A safety night (discussion/panel) -Salt box	-Homebuilt kiln/ drying wood -A simple weed pot -Sharpening refresher -Basic drying of wet wood -A seed-pod turning.	-Shear scraping -Inlace -Finishing -Chucking and holding -Jigs and fixtures. -A wall clock or a desk clock

### Notes

- **Meetings start** at 7:30, doors open at 7:00. The open period from 7:00 and 7:30 is a great time to discuss problems or successes at the "**Show and Tell**" table and converse with other members.
- **There may be last minute schedule changes** due to weather or other unforeseen causes, if in doubt, check the website for the latest meeting info as the date draws near.
- **Raffle tickets** and the **library** are usually available between 7:00 and 7:30 as well as during the break period.





## Items wanted and for sale

Ads are free for members and run until you sell your item or withdraw your advertisement. To run an ad or to remove one, call or email Bob at 519-457-6555 or [66.bobhewson@gmail.com](mailto:66.bobhewson@gmail.com). Members can support other members by **buying or selling: good deals and at good prices!** Ads are first emailed to our mailing list, if not sold the ad is published in our newsletter as well.

**Commercial "business card" type** advertisements are available on this newsletter too for \$30 for insertion into 5 - 6 issues per year.

**Please note:** The Guild provides a means of connecting buyer and sellers through these ads. It is up to the buyer to ensure the item offered is as stated and the two parties should agree between them as to any warranty/guarantee.

**Sales tables:** Members are welcome to set up a "sales" table in the bar section/room before the meeting starts.

**We issue our newsletter** on a non-date-specific schedule, generally every two months. Our newsletter is found on the internet at <http://www.thamesvalleywoodturners.com/> in glorious **colour**. Any newsletter photos are available to members by request to the Editor ([66.bobhewson@gmail.com](mailto:66.bobhewson@gmail.com)).



**Hamilton Mountain**, located at  
1361 Rymal Rd. E., Hamilton, Ontario L8W 3N1

Phone: [905-388-0784](tel:905-388-0784)

Fax: 905-388-9745

Email: [sales@tegstools.com](mailto:sales@tegstools.com)

Visit our web site <https://www.tegstools.com/>

See our Lathes:

<https://www.tegstools.com/woodworking-machinery-lathes>



## For Sale: Coronet No. 3 Wood Lathe

Excellent lathe for the first-time hobbyist.

The 12" dia. capacity over the bed allows for a variety of bowls and platters to be turned, and with the ability to swivel the headstock 90°, it increases the turning diameter to 30". The additional parts necessary for turning in the forward configuration are also included.

The 48" rails provide plenty of length for turning spindles that are beyond the capacity of other bench top lathes. Included for long spindle work is a second banjo and a 17" tool rest. The drive shaft and bearings have been replaced within the last 100 hours of use, and an emergency stop/panic button added.

The included bench top is constructed with a layer of ¾" Ply 77½" x 25½" each side of a ½" hi density rubber core to provide a rigid and stable top. The drawers are 12" x 18" x 4½" ID with full extension 100# drawer slides.



**Contact:** John Rice, 336876 33<sup>rd</sup> Line, RR3, Embro (The postal address is Embro, but I live in the village of Harrington)

**Cell phone:** 226-921-1244

**Email:** [harrington336@quadro.net](mailto:harrington336@quadro.net)

**Price: \$400**

For transportation the lathe and bench can be disassembled into manageable pieces. Total weight ~350lbs.

[Detailed specification continue on the next page](#)

## SPECIFICATION

### CORONET NO. 3 LATHE - SPECIFICATIONS

BETWEEN CENTRES 36" (914 mm)  
48" (1219 mm)

DIAMETER BETWEEN CENTRES (OVER BANJO) 9" (229 mm)

DIAMETER OVER BED 12" (305 mm)

BOWL TURNING CAPACITY (WITH END TURNING REST)  
30" (762 mm) DIA.

SPINDLE SPEEDS (RPM) 425. 625. 925. 1360. 2000.

MOTOR 3/4 HP 1425 RPM 1 PHASE T.E.F.V.

DRIVE POLY-V

HEADSTOCK SPINDLE & TAILSTOCK BARREL BORED TO SUIT NO. 1 M.T.  
SHANK TAILSTOCK BARREL BORED THROUGH

SWIVEL HEADSTOCK

MAIN BEARING PHOSPHOR BRONZE ADJUSTABLE

O/ALL DIMENSIONS 36" M/C-64" (1626 mm) LONG.  
14 1/2" (368 mm) HIGH  
15" (381 mm) FRONT TO BACK  
48" M/C-76" (1930 mm) LONG.  
14 1/2" (368 mm) HIGH  
15" (381 mm) FRONT TO BACK

TOTAL WEIGHT INCLUDING MOTOR AND STARTER

36" M/C-189 lb (86 kg)

48" M/C-201 lb (91 kg)

HEADSTOCK 3/4"-16  
TAILSTOCK ADAPTER 3/4"-10 (No. 1 M.T. CAN BE USED ON HEAD + TAILSTOCK)  
HEADSTOCK ADAPTER 1"-8